

Printing with Banner Paper from the Macintosh® OS X Mavericks 10.9 System

Knowledge Article ID: KBA01401324

Version: 1

Status: Published

Published Date: Feb. 5, 2016 5:58 pm

Type: How to

Products: bizhub C224, bizhub C654e, bizhub C554, bizhub C284e, bizhub C754, bizhub C284, bizhub C654, bizhub C224e, bizhub C554e, bizhub C454e, bizhub C454, bizhub C754e, bizhub C364e, bizhub 364

Question:

How to print with banner paper from Macintosh® OS X Mavericks 10.9 System

Answer:

➤ **Loading banner papers**

This machine prints data stored in a computer on banner paper that is up to 47-1/4 inches (1200 mm) in length. Up to 10 banner sheets can be loaded into the **Bypass Tray**.

1. Install the **Mount Kit MK-730** into the **Bypass Tray**.



2. Set the **Guidance** of the **Mount Kit MK-730**.



3. With the **print side facing down**, load paper into the tray.



4. Slide the **Lateral Guide** to fit the size of the loaded paper.



▶ **Printing on banner paper**

This machine accommodates paper with a length of up to 47-1/4 inches (1,200 mm) in the **Bypass Tray**.



▶ **Printable paper**

Paper width	Paper length	Paper weight
8-1/4 to 11-11/16 inches (210 to 297 mm)	18 to 47-1/4 inches (457.3 to 1,200 mm)	33-13/16 to 55-7/8 lb (127 g/m ² to 210 g/m ²) (Using the printer driver, select the paper type appropriate for the weight of the banner paper to be used. 32-3/16 lb to 41-3/4 lb (121 g/m ² to 157 g/m ²): Thick 1+, Thick 1+ (Side 2) 42 lb to 55-5/8 lb (158 g/m ² to 209 g/m ²): Thick 2, Thick 2 (Side 2) 55-7/8 lb (210 g/m ²): Thick 3, Thick 3 (Side 2))



Tips

- ❖ When printing data on banner paper, select a paper type appropriate to the banner paper using the printer driver. Then, the [Paper Tray:] is set to [Bypass Tray] and [Resolution:] is fixed to [600dpi].

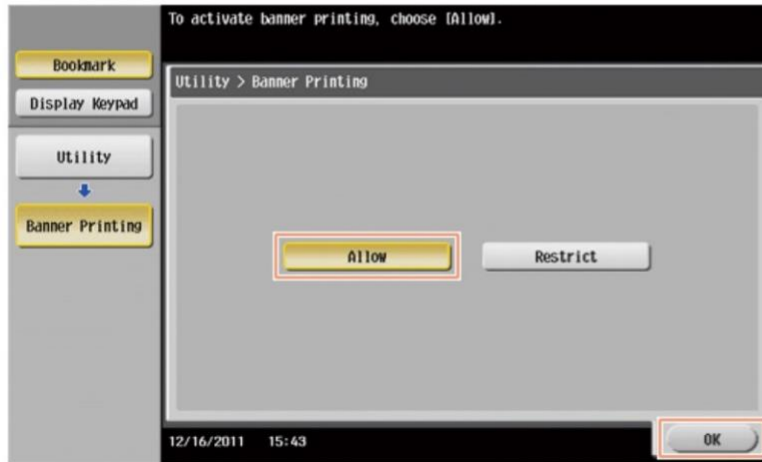


****Note: if codes are enabled, user must login at the machine prior to completing the steps below.**

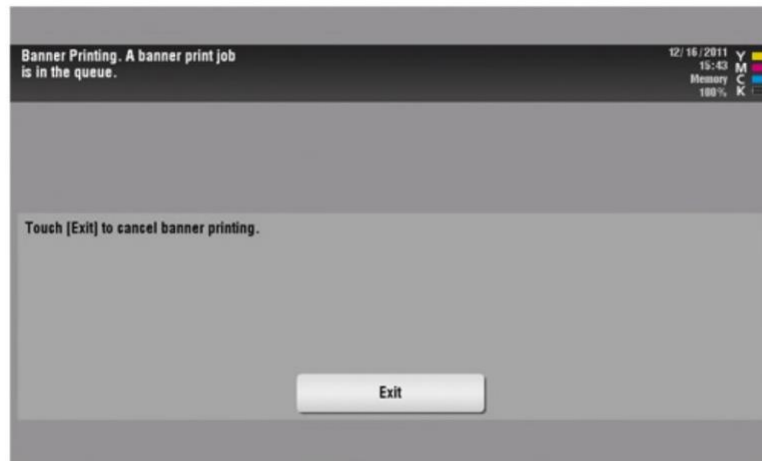
How to print on banner paper

Register the size of the banner paper, then specify the registered size.

1. On the Touch Panel of this machine, tap [Utility] - [Banner Printing].
2. Select [Allow], then tap [OK].



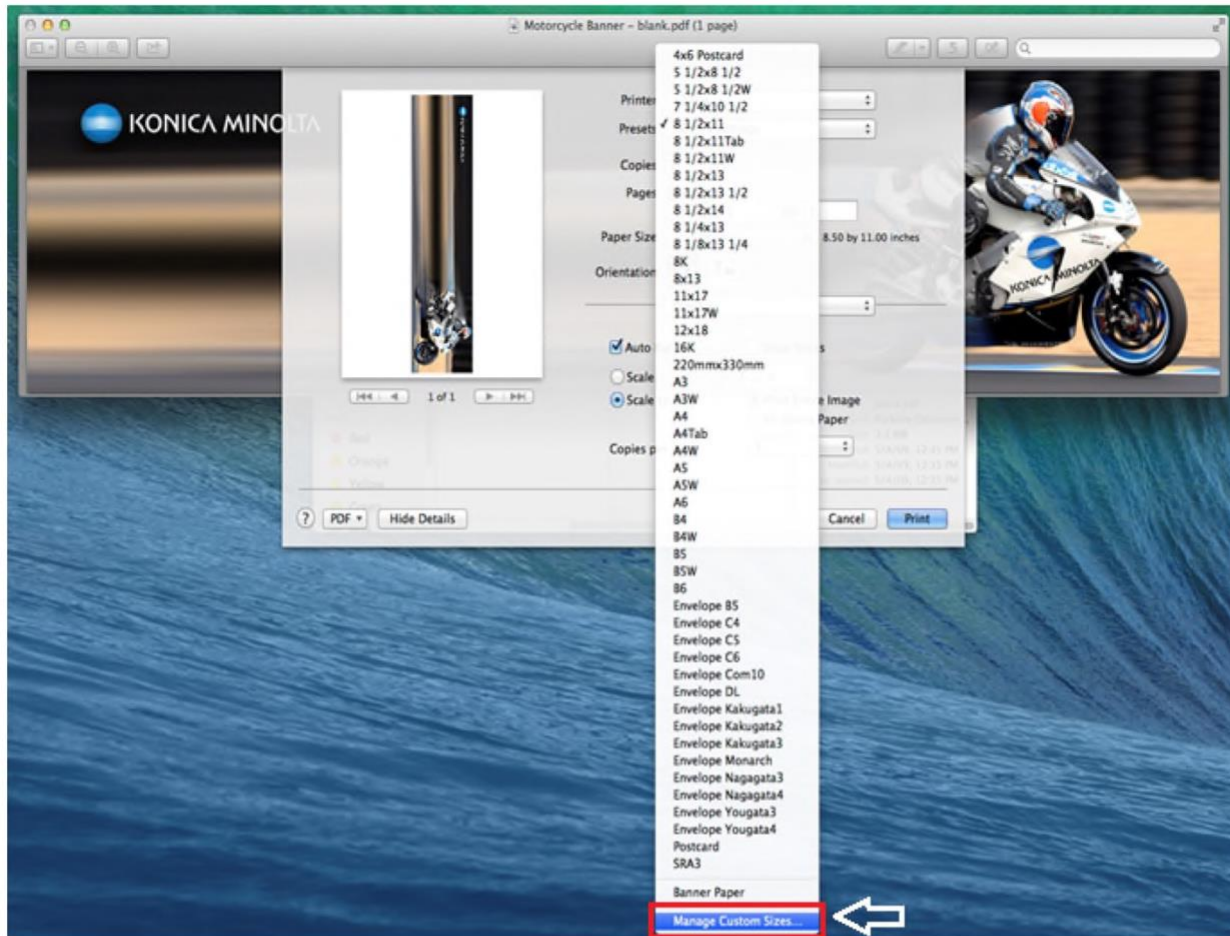
3. Check that the screen waiting for banner printing job has appeared.
 - ➔ If a job is received for printing on paper of a non-banner size while a banner print job is expected, that job is discarded.
 - ➔ When a banner paper print job is queued, the machine cannot receive a facsimile.



When you have finished the above settings, start to print from the PC.

4. In the [Page Setup] (or [Paper Setup]) window, open the window for registering a custom size.
 - ➔ In Mac OS X 10.9, select [Paper Size] then scroll down and select [Manage Custom Sizes...]





5. Click [+]. (Mac OS X 10.9).

6. Enter the name of the paper size you are registering.

➔ Be sure to use paper size names other than existing names, such as A4 and Custom.

7. Configure the following items.

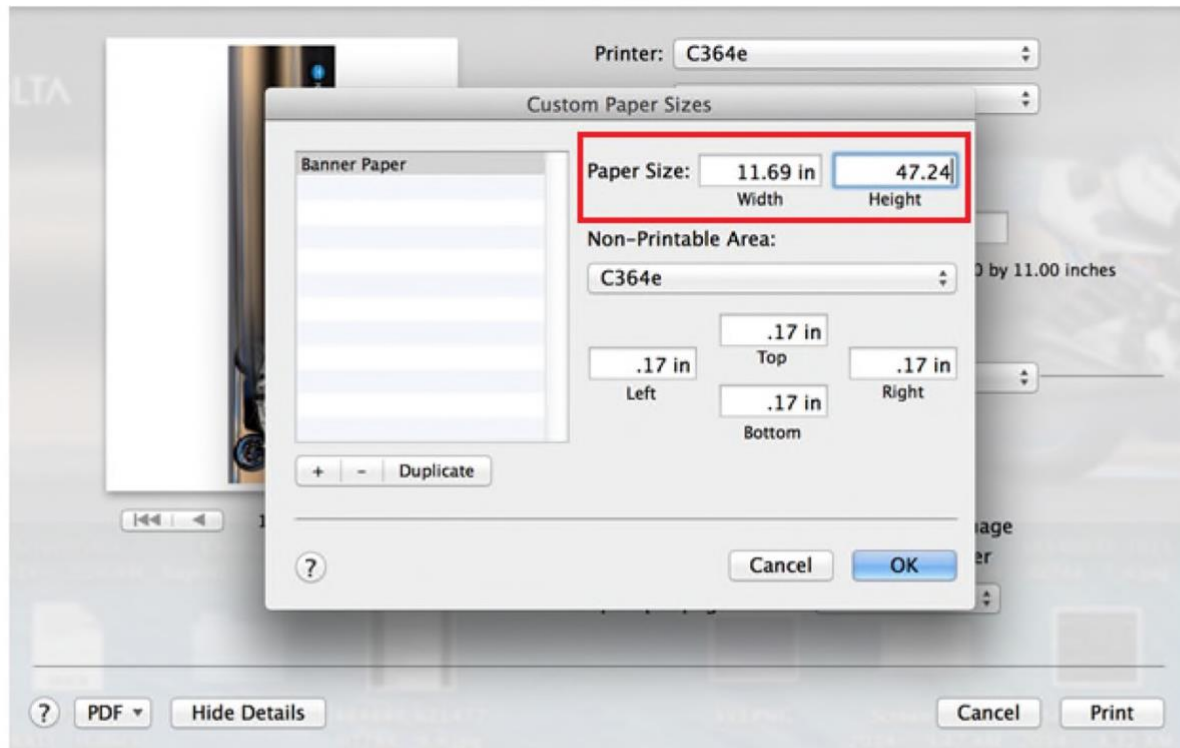
➔ [Page Size] (Paper Size): Specify the width and length as desired.

Specify the paper size within the allowable range of the banner size (Width:8-1/4 to 11-11/16 inches (210 mm to 297 mm), Length: 18 to 47-1/4 inches(457.3 mm to 1,200 mm)).

➔ [Printer Margins]: Specify the top, bottom, right, and left margins of the paper.

➔ Since Konica Minolta Banner Paper is being used (11.75" x 47.25" [W x L], 100lb Text [200 sheets per box] - Item #7640002409) the size that must be chosen is:
Width: 11.69 x Height: 47.24





8. Click [OK] (Mac OS X 10.9).

The custom paper size is then registered.

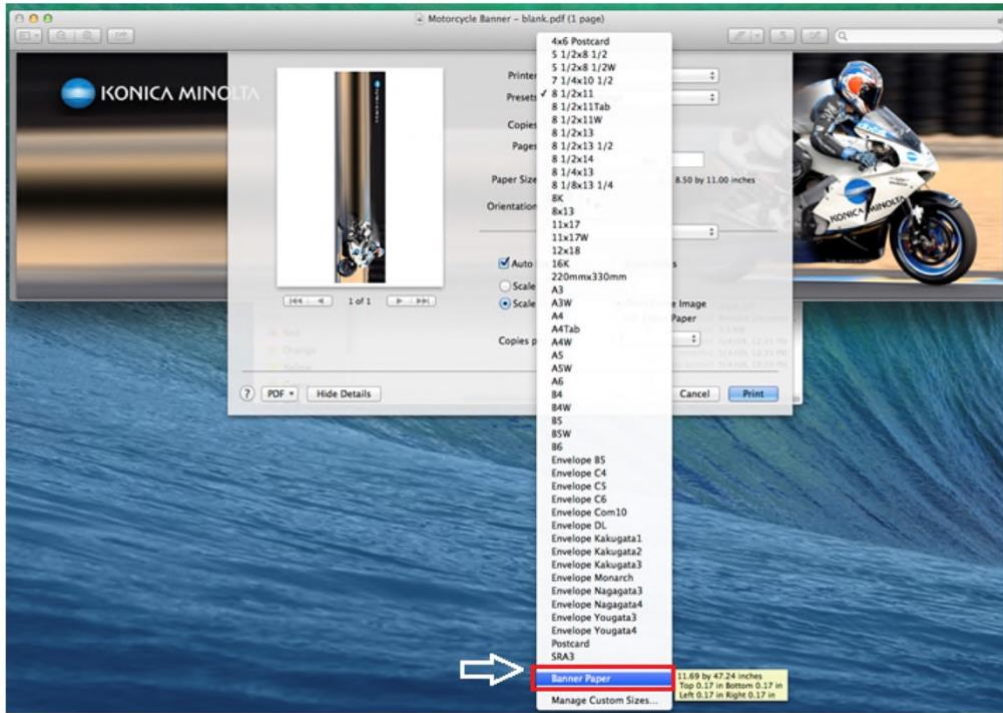
9. In [Paper Size] in [Page Attributes], select the registered paper size.

➔ In Mac OS X 10.9, you can also select the paper size from [Paper Size:] in the Print window.

10. To display the Print window, click [Print] in the [File] menu.

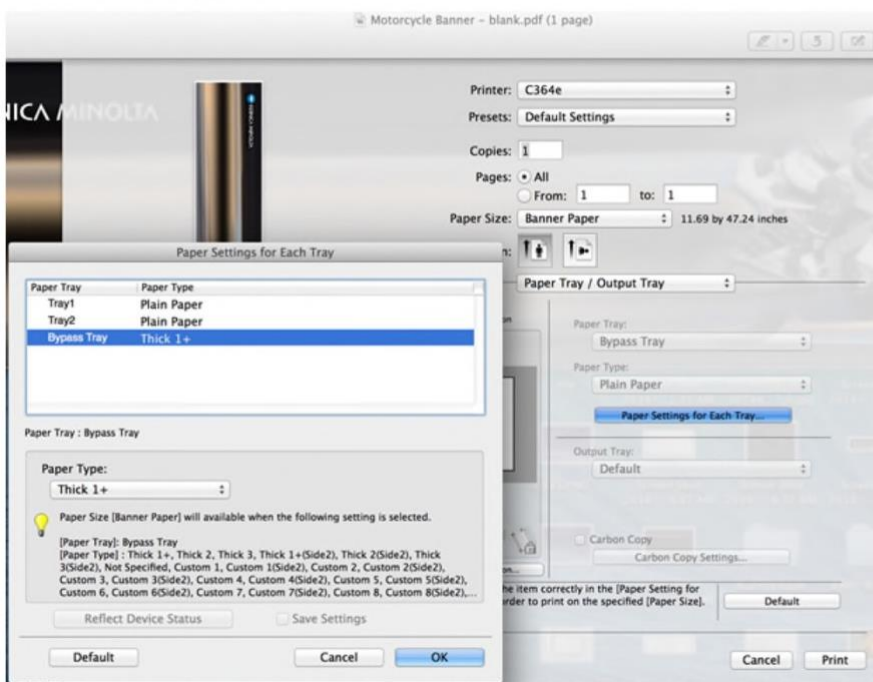
11. Check to see that the custom paper size (registered in Step 8) is shown in the [Destination Paper Size] of [Paper Size].





12. Check that [Paper Tray:] of [Paper Tray / Output Tray] is set to [Bypass Tray] and that the [Paper Type:] is set to the desired paper type ([Thick 1+]/[Thick 2]/[Thick 3]), and also they are grayed out to prevent them from being changed.

- ➔ If the [Paper Type:] is not set to [Thick 1+]/[Thick 2]/[Thick 3], set the paper type in [Paper Settings for Each Tray...].
- ➔ If the specified paper size is not in the allowable range of the banner size, [Paper Tray:] or [Paper Type:] is not grayed out to enable you to change them. In this case, check the setting of the custom paper size.



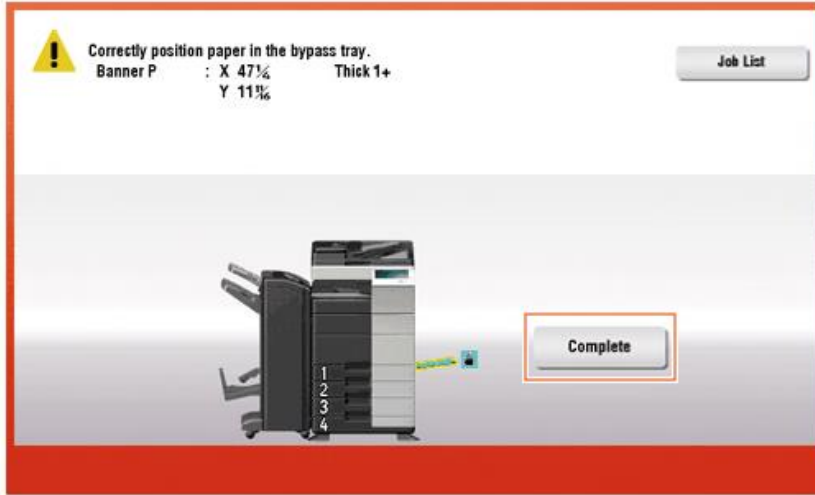
13. Execute printing.

A message appears on the Touch Panel to prompt you to load papers.

14. Load the banner paper into the Bypass Tray.

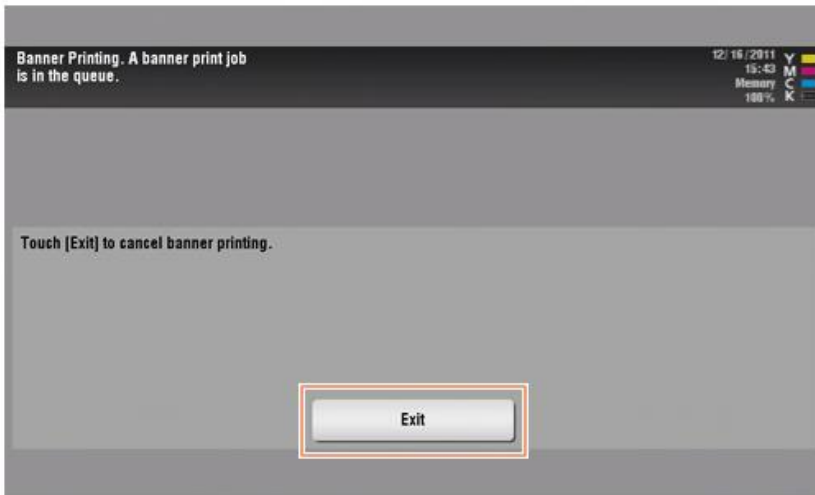
➔ Refer to the section, **Loading banner papers** at the beginning of this article.

15. When you have loaded a banner paper, tap [Complete].



Printing on the banner paper starts. Support the ejected banner paper by hand. To continue printing, execute printing from the computer.

16. Tap [Exit].



A message confirming the end of banner printing is displayed. To terminate printing, tap [Yes].

Technical Notes



