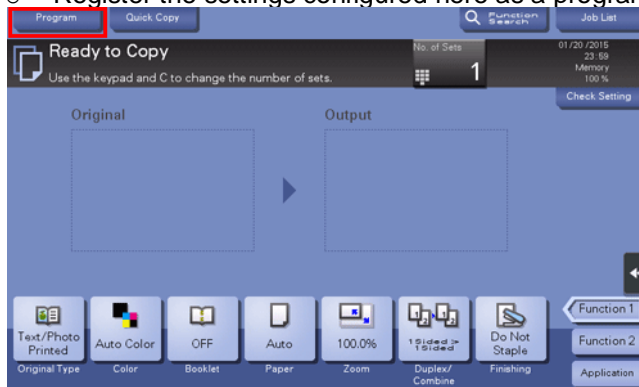


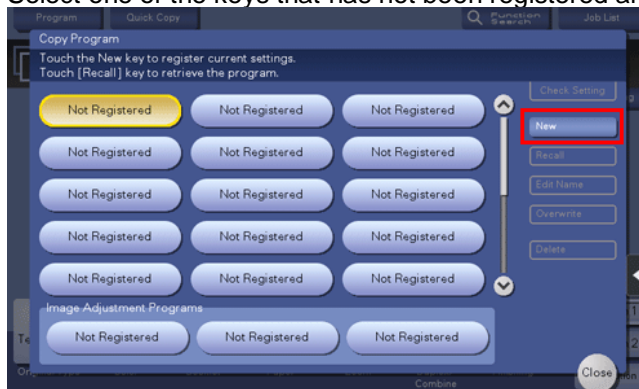
Registering a copy program



1. Tap [Copy].
2. Configure copy settings.
 - Register the settings configured here as a program.



3. Tap [Program].
4. Select one of the keys that has not been registered and tap [New].



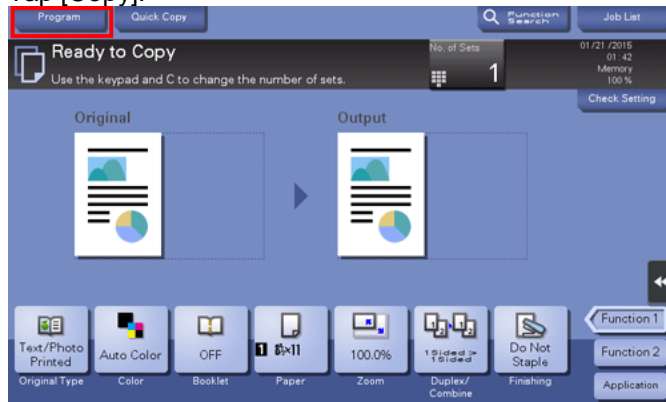
- To register a setting related to image quality, select an unregistered key from [Image Adjustment Programs].
For image adjustment program, you can register the settings of [Original Type], [Density], [Bkgd. Removal], [Text Enhancement], [Neg-/Pos. Reverse], [Background Color], [Color Adjust], and [Mirror Image].
5. Enter the program name, then tap [OK].

Recalling a copy program for copying

1. Load the original.

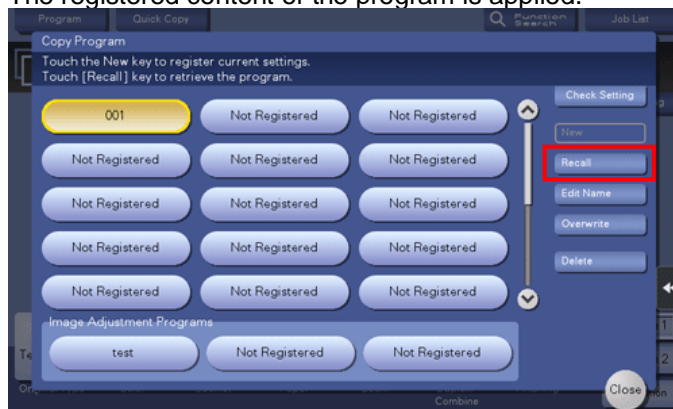


2. Tap [Copy].



3. Tap [Program].
4. Select the program you want to recall, and tap [Recall].
 - You can also recall a [Image Adjustment Programs] from [Original Type].
 - Tap [Check Setting] to view the selected program settings.

The registered content of the program is applied.



5. Press the **Start** key.
 - If desired, tap [Check Setting] before starting a copy, and check the settings.

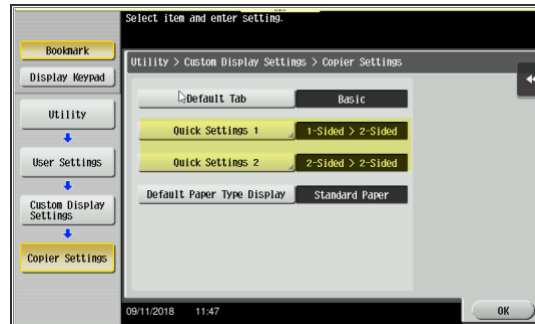


The original is scanned, and copying starts.

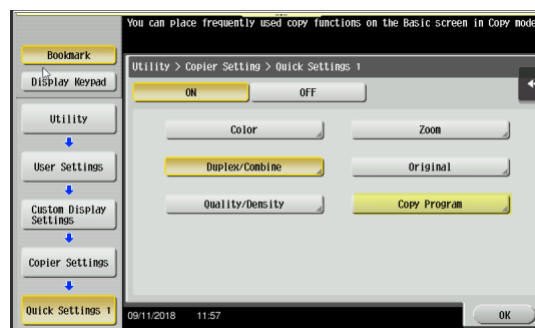
- If you press the **Stop** key while scanning or printing an original, processing is stopped, and a list of inactive jobs is displayed. To cancel the operation, delete the stopped jobs from the list.
- If [Ready to accept another job.] appears while printing a job, you can scan the next original.

To put a program button on the copy screen

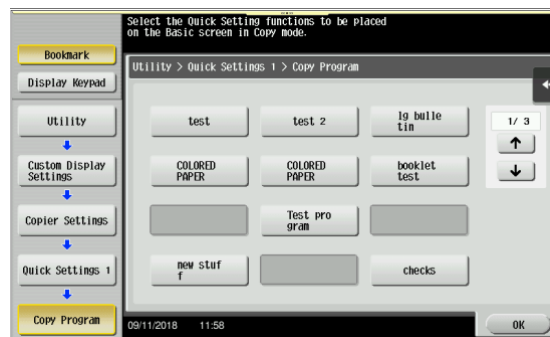
1. At the machine, select Menu>>Utility>>User Settings>>Custom Display Settings>>Copier Settings.
2. Choose either Quick Settings 1 or Quick Settings 2



3. On this screen, select Copy Program to set a program on one of the buttons.



4. Choose the program desired to show on the front screen.



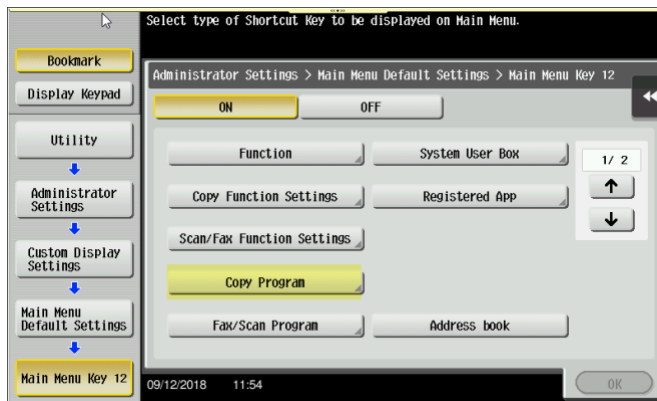
5. Select OK/Close appropriately to exit the Utility. The desired program button will be on the right side of the screen.

To put a program on the Home Screen

1. At the machine, select Menu>>Utility>>Administrator Settings (input password)>>System Settings>>Custom Display Settings>>Main Menu Default Settings.



2. Select a Main Menu Key that is not in use.
3. Turn the Key on and then select what should appear. In this example Copy Program has been selected.



4. Choose the desired copy program, then keep selecting OK and Close to exit the Utility.