



ZT200 Series

Small in price, big in performance

Lower price with essential ease of use and performance features.

Features

- Compact footprint
- Ideal for light industrial and commercial environments
- Available in direct thermal or thermal transfer models

Portfolio Differentiators

- Moderate-duty cycle with a limited feature set
- Ideal for commercial and light industrial applications



ZT400 Series

Sturdy, simple, smart

Rugged durability, designed to grow with your evolving business needs.

Features

- 4.3-inch full-color touch display for quick settings changes
- Tool-less printhead and platen roller replacement
- RFID available on both 4" and 6" widths
- RFID On-Metal solution available for ZT411 (203 and 300 dpi only)

Portfolio Differentiators

- Moderate to high duty cycle with a wide variety of features
- Ideal for industrial environments



ZT510

Essential features for heavy-duty printing

An ideal balance between performance and value with essential features for heavy-duty printing.

Features

- All metal construction supports continuous performance without throughput delays
- Icon-based, multilingual graphical LCD user interface is intuitive to operate

Portfolio Differentiators

- Limited feature set
- High-duty cycle for mission critical operations in the toughest environments



ZT600 Series

Intelligence and industrial brawn

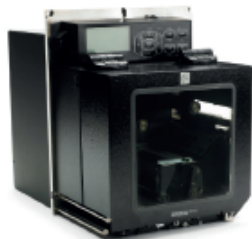
Industrial strength and full featured for every challenge.

Features

- All metal construction supports continuous heavy-duty performance with high throughput
- Icon-based, multilingual graphical LCD user interface is intuitive to operate
- Optional full-color, 4.3-inch color touch display

Portfolio Differentiators

- Wide variety of features
- High-duty cycle for mission critical operations in the toughest environments
- RFID available on both 4" and 6" widths



ZE500

For next-gen solutions

OEM print engine for print and apply labeling applications.

Features

- Rotatable display
- Extended-life modular drive system
- RFID available on 4-in width

Portfolio Differentiators

- High-duty cycle in the toughest environments
- Industrial all-metal construction
- Designed to be integrated into a print and apply solution

