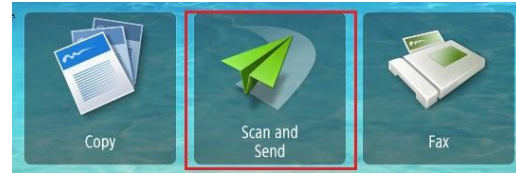


## Canon ImageRUNNER Advance: Create a Quick Menu Button

1. Select the **Application** icon. (Example – Scan and Send.)



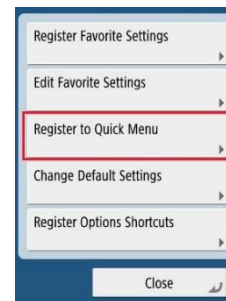
2. Select settings. For example, select a destination(s), 2 or 1 sided, PDF (Compact) options. Select the **Options** button to access other settings as necessary, Skip blank pages, Preview etc..



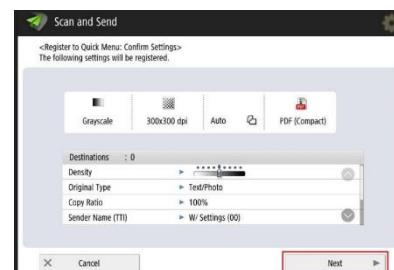
3. Select the **Box or Gear** in upper right-hand corner.



4. Select **Register to Quick Menu**.

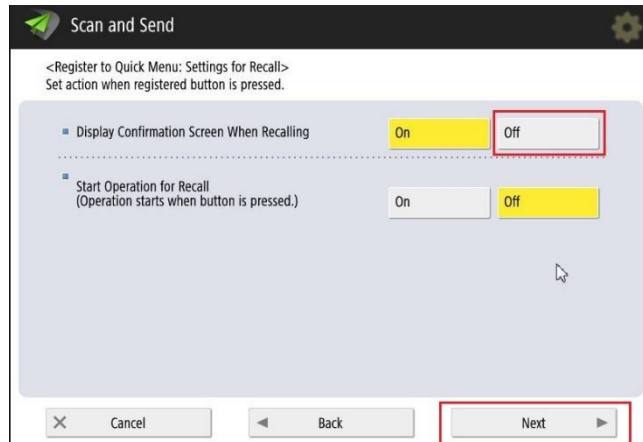


5. Verify the settings and select **Next**.

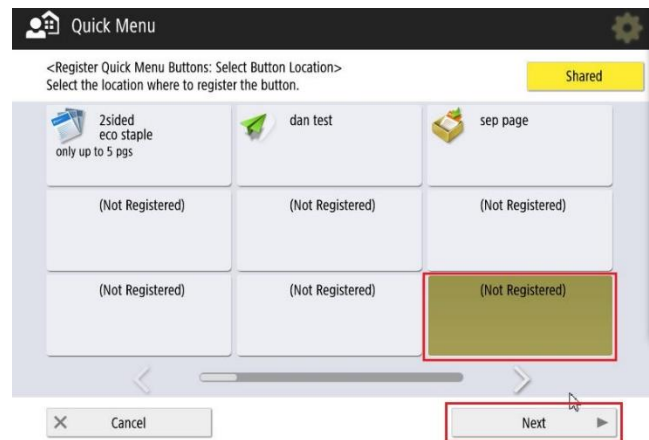


## QUICK GUIDE

6. Turn **OFF** the confirmation screen and select **Next**. (This will skip an extra popup upon selecting the shortcut in the future.)

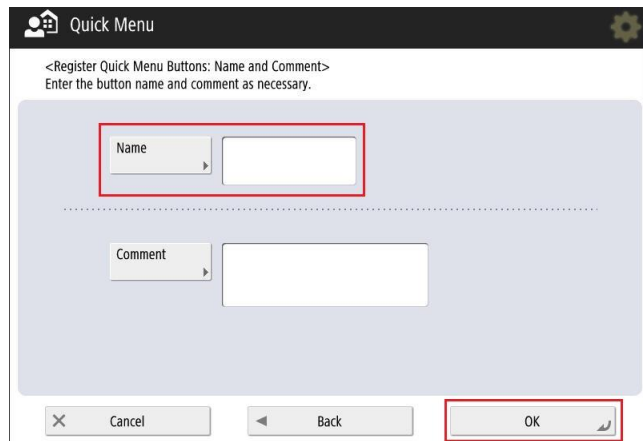


7. Select an (Not Registered) button and select **Next**.



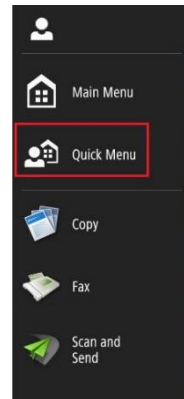
8. Enter a Name for the Quick Menu button and select **OK**.

A Confirmation of Registration displays.

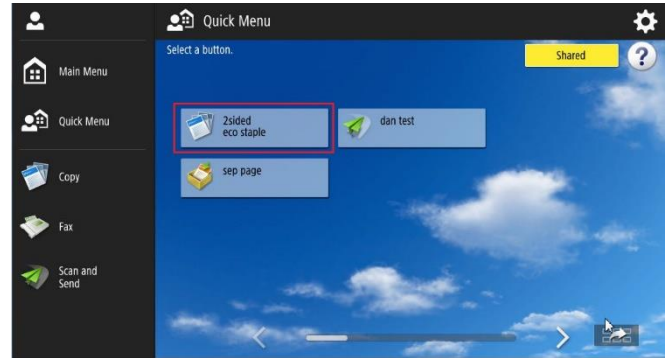


## Canon ImageRUNNER Advance: Recalling Quick Menu button

1. To access the button, press the Quick Menu link.



2. Press the registered button to recall the settings.



3. Select **Start** to initiate programmed options.

