

Canon ImageRUNNER Advance: Auto Gradation Adjustment

This function is a great first step to fixing color quality issues when copying/printing by adjusting the density of the toner laid onto the paper.

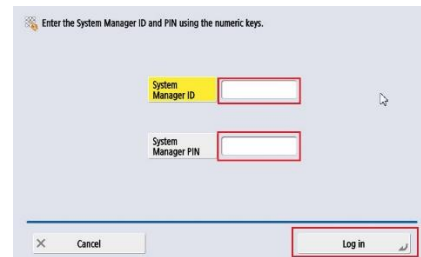
What is Auto Gradation Adjustment?

This is a function that adjusts toner density (darkness) on the paper when printing/copying. This will help with the color accuracy and image quality. One reason a gradation may need to take place is doing a print/copy job on heavy paper/media. (Different thickness or different paper may use toner differently.) The machine has options to adjust for multiple thicknesses.

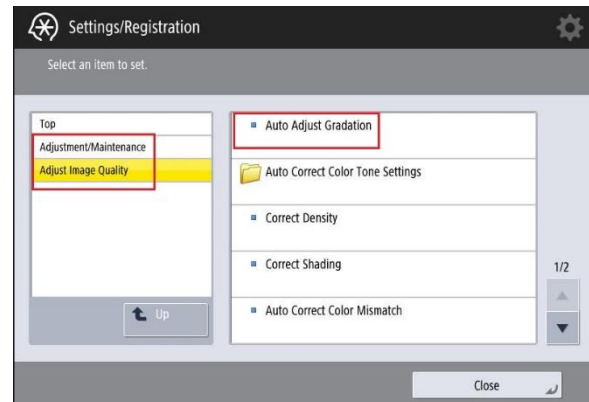
1. On the panel of the copier, select the Settings/Registration button.



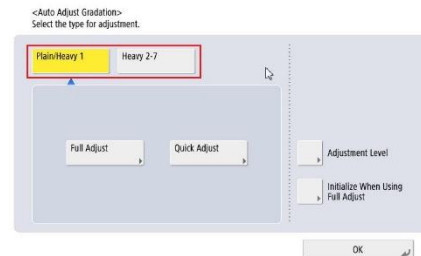
2. Log in if necessary.



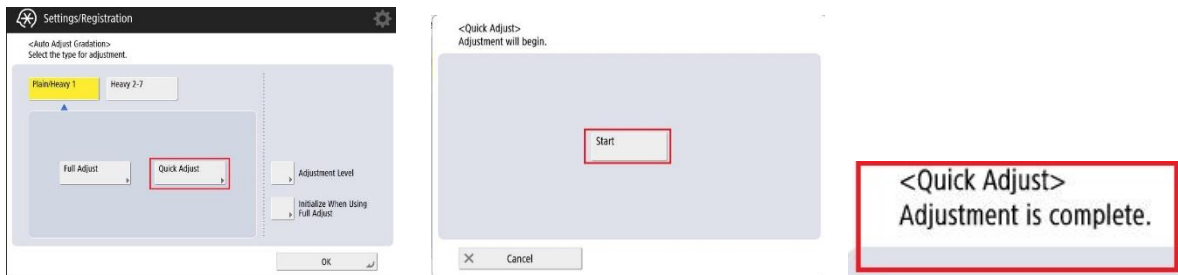
3. Select the following path to access Auto Adjust Gradation.
Adjustment/Maintenance >> Adjust Image Quality >> Auto Adjust Gradation.



4. Choose the thickness of paper to adjust for: Plain/Heavy 1 or Heavy 2-7.

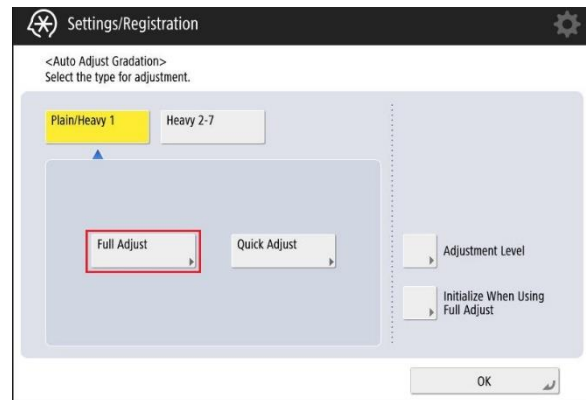


5. Recommend completing a Quick Adjust before completing a Full Adjust to align the color registration.
 - a. Full Adjust:
 - i. Best to use when color or image quality needs to be adjusted. (Ex: Blue is looking Green.)
 - b. Quick Adjust:
 - i. Nice option for a short adjustment. Use when:
 1. Machine receives frequent calibrations as routine maintenance.
 2. Color specific job coming up.
 3. Machine linearization before Fiery/Controller calibration.

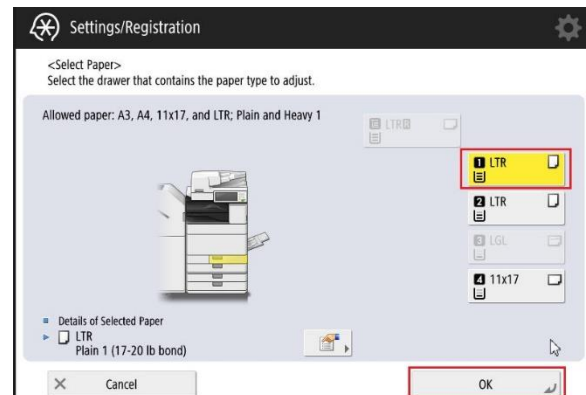


6. When the Quick Adjust is complete, perform a Full Adjust.

Full adjustment performs precise linearization by outputting and scanning test prints. The machine will print out 4 test pages, and have the end user scan them in to adjust.



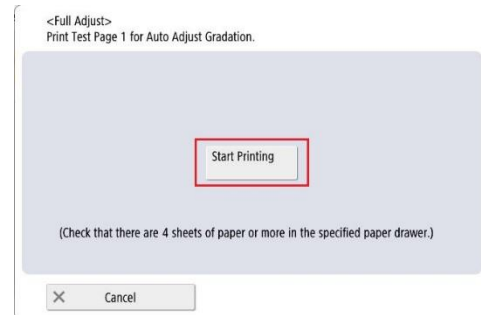
7. Select the drawer that contains the paper type to adjust and select OK.



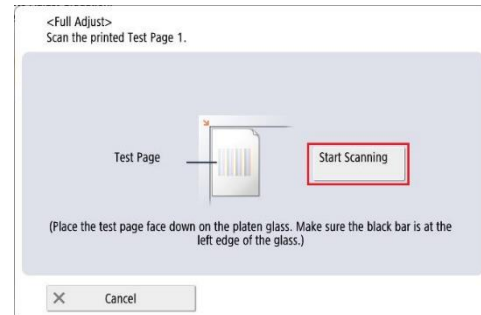
QUICK GUIDE

LOFFLER

8. Select the “Start Printing” button to print the first of 4 test pages.

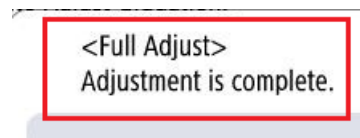


9. Place printed test page on glass, then select the “Start Scanning” button.



10. Repeat 3 more times until machine says <Full Adjust>... Adjustment is complete.

Note: The adjustment may take a few minutes.



11. Close out of Settings and Registration once completed.

