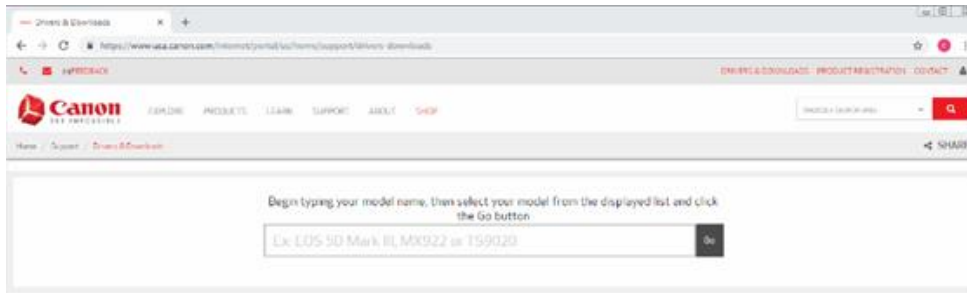
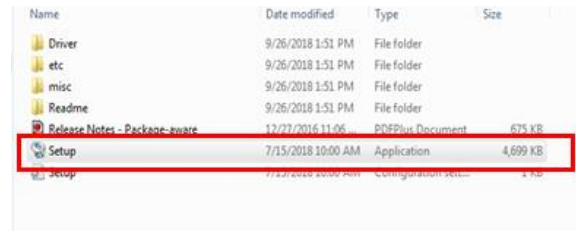
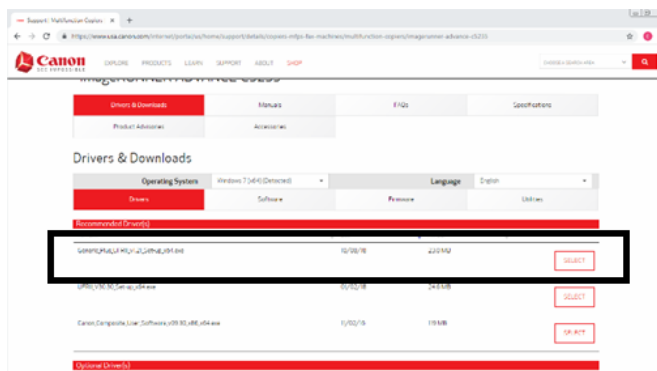


Canon ImageRUNNER Advance: Installing Windows Print Driver

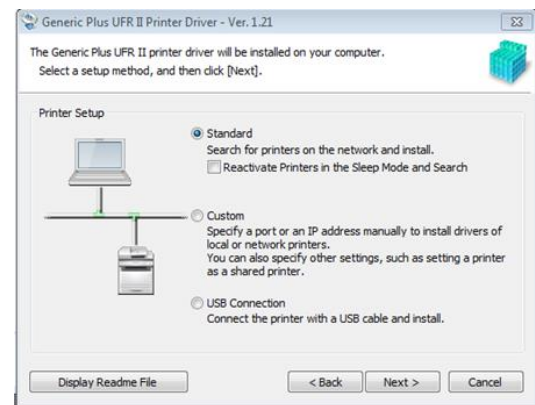
1. Open www.usa.canon.com and select **Drivers and Downloads**.
2. Search for the model of the Canon device.



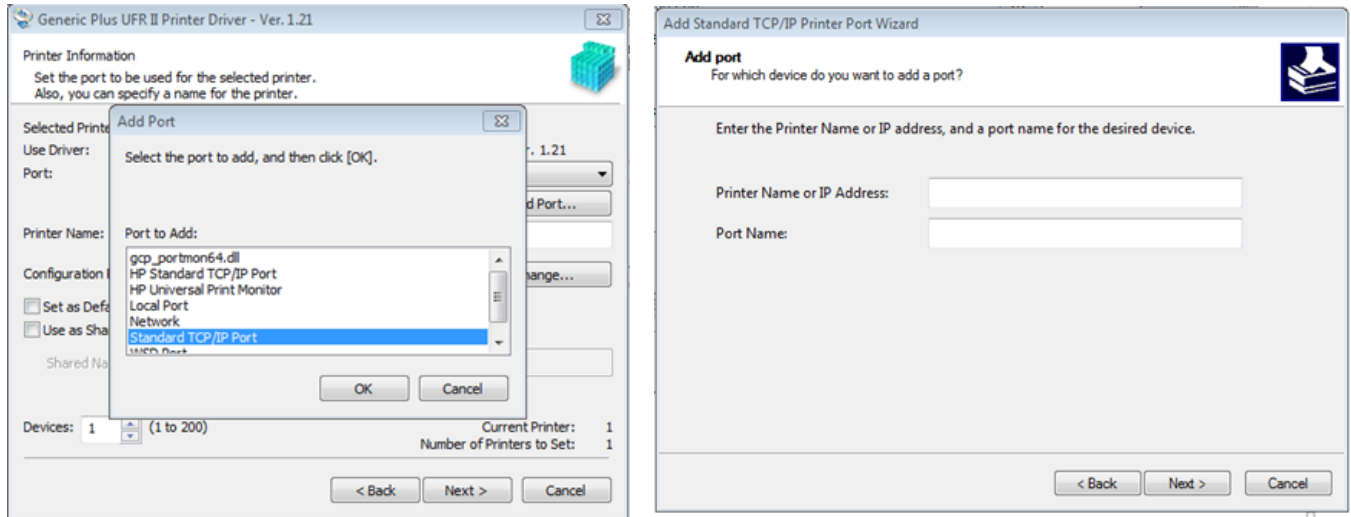
3. Select the recommended driver from Canon and download. Loffler recommends the Generic plus UFR II in most cases.



4. Open the downloaded file and **extract**.
5. Open file to run the **setup wizard**.
6. Follow the steps in the wizard. Add machine by **Standard**.
7. If the machine automatically finds the IP address, finish the installation. If it does not, continue onto the next steps.
8. Select Back until the **printer setup** window appears and select custom.
9. Press Next on the wizard.



10. Select **Add Port** and select **Standard TCP/IP Port**. Press OK.
11. A new installation wizard will appear. Press Next.
12. Enter the machine's **IP Address** and press Next.
 - To find IP Address at Device: Select Settings/Registration >> Preferences >> Network >> Output Report and the report will print with the IPv4 address.
13. Press Finish. The installation is complete.



****Note:** Print drivers are set to 2-sided and color by default. For assistance changing default settings, please contact the Loffler service department. Contact information is located on the red sticker on the front of the device.

