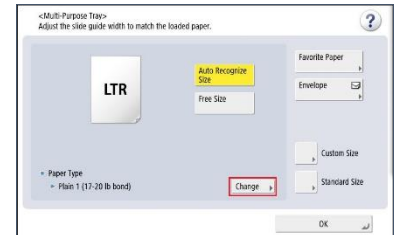


# Canon ImageRUNNER Advance: Setting Paper Type in the Multipurpose Tray

## At the Copier

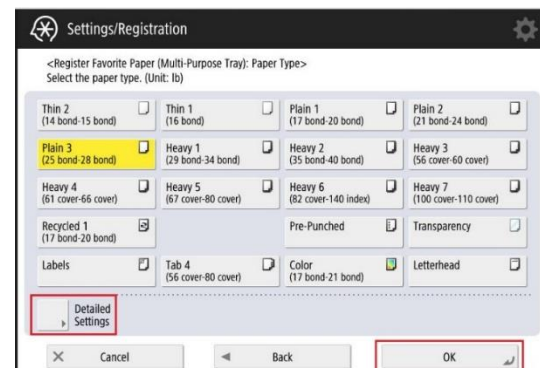
1. Insert the paper into the multipurpose tray to open the multipurpose tray's Custom Size display window.
2. Select **Change** to change the paper type.



3. Select the correct paper type.

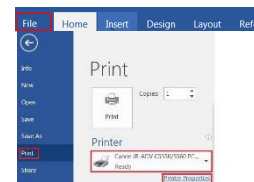
When determining which "Heavy" is the weight of the cardstock being used, open the **Display Setting** button to view a chart with the paper weights listed.

4. Select **OK**.



## From the computer, access the print driver:

1. Open the document.
2. Select **File>Print**.
3. Select the **Canon** copier.



4. Select the **Paper Source** tab.
5. Select **Multipurpose tray**.
6. Select the paper type from the Settings button.
7. Click **OK**.

