



ASTRO

CDM-700 Series

(Covers Domestic 115V & European 220V Models)

Conveyor Stacker



USER'S GUIDE/PARTS CATALOG

This manual is intended solely for the use and information of Astro Machine Corp., its designated agents, customers, and their employees. The information in this guide was obtained from several different sources that are deemed reliable by all industry standards. To the best of our knowledge, that information is accurate in all respects. However, neither Astro Machine Corp. nor any of its agents or employees shall be responsible for any inaccuracies contained herein.

All rights reserved. No part of this book may be reproduced or transmitted in any form or by any means, electronic or mechanical, including photocopying, recording, or any information storage and retrieval system, without permission in writing from the publisher.

INTRODUCTION

The CDM-700 Conveyor transports media from the Printer and stacks it. As the first piece of stock exits the Printer, the motor-driven Conveyor Tapes under the Stacker Wheels move it. The next piece of stock exits the Printer, overlaps the preceding piece, and is moved along the Conveyor. After clearing the Stacker Wheels, the stock can be unloaded by hand without having to stop the Printer.

SPECIFICATIONS*

Power Requirements:	115 VAC, 60 Hz, 9.0 AMP
Optional Availability:	220 VAC, 50/60 Hz, 0.5 AMP
Motor Circuit Breaker:	1 AMP
Fuse:	0.5 AMP
Speed Of Tapes:	0" - 250 feet per minute (variable)
Dimensions:	Width: 15" (38.1 cm) Length: 34.5" (87.6 cm) Height: Table Top Weight: 33 lbs. (15 kg)

* MANUFACTURER RESERVES THE RIGHT TO CHANGE SPECIFICATIONS WITHOUT WRITTEN NOTICE.

SAFETY PRECAUTIONS

THIS EQUIPMENT PRESENTS NO PROBLEM WHEN USED PROPERLY. OBSERVE SAFETY MEASURES WHEN OPERATING THE CONVEYOR:

READ THIS MANUAL CAREFULLY AND FOLLOW RECOMMENDED PROCEDURES.

- KEEP HANDS, HAIR, AND CLOTHING CLEAR OF ROLLERS, TAPES, AND OTHER MOVING PARTS.
- ALWAYS TURN CONVEYOR OFF BEFORE ADJUSTING OR CLEANING.
- DISCONNECT POWER CORD WHEN MAKING ANY ADJUSTMENTS OR PERFORMING ANY MAINTENANCE NOT COVERED IN THIS MANUAL.

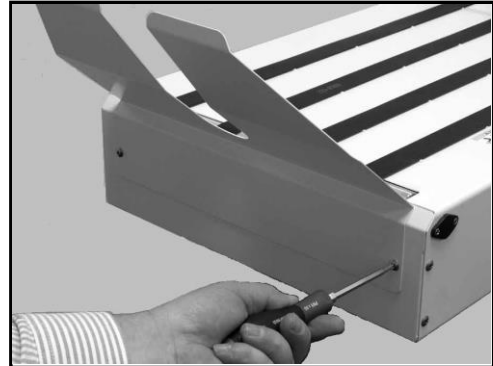
WARNING!

**ONLY CONNECT CONVEYOR TO A PROPERLY GROUNDED OUTLET!
FAILURE TO DO SO CREATES RISK OF ELECTRICAL SHOCK!**

USER GUIDE

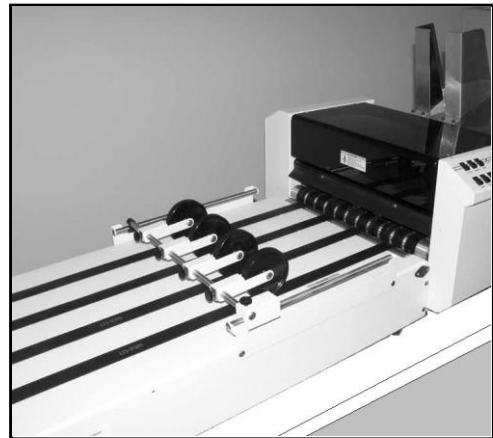
Assembling Conveyor

1. Unpack Conveyor. **Do not discard carton until Conveyor is assembled.**
2. Attach Receiving Tray to Conveyor with two screws provided.



Positioning Conveyor

1. Place Conveyor on the same sturdy table or workbench next to the Printer as shown.
2. Center Conveyor relative to Printer's exit.



Operating Conveyor

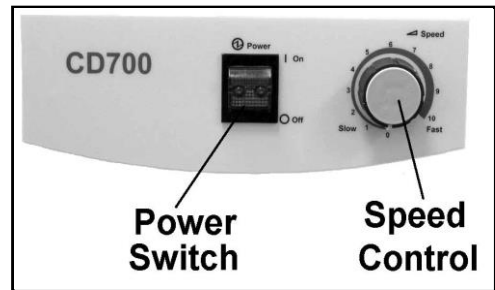
Plug Conveyor into a properly grounded wall outlet using power cord supplied.

CAUTION
CONVEYOR IS DESIGNED TO BE PLUGGED INTO A GROUNDED OUTLET.
FOR YOUR SAFETY, DO NOT REMOVE GROUND PIN FROM LINE CORD.

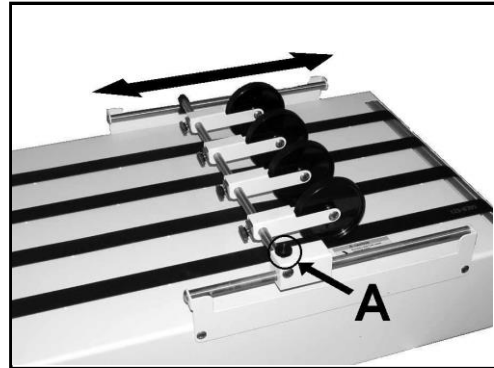


USER GUIDE

1. Turn Conveyor and Printer ON.
2. Feed stock through Printer and observe the way it is received by the Conveyor.



3. Loosen Locking Knob [A] and adjust Stacker Wheels so lead edge of media just touches Stacking Rollers as it exits the Printer.
4. Adjust Speed Control to set the amount of overlap between the pieces. (*For less overlap turn Speed Control clockwise, for more overlap turn Speed Control counterclockwise.*)



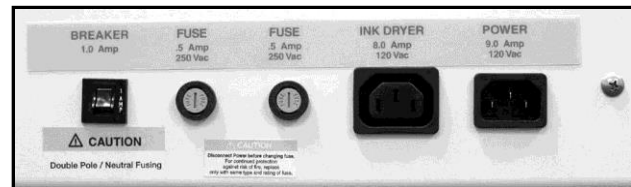
Reverse Operation

Conveyor is designed to run from right to left. It can also operate from left to right. To switch operation direction, first move Guide Roller Assembly and Stacking Tray to opposite sides of the Conveyor. Then switch the Reversing Switch (*located under Conveyor*) to the reverse operating position.



Troubleshooting

If Conveyor fails to run, check for jammed paper between Tapes and Roller. Also, check Fuse and Motor Circuit Breaker and replace or reset if necessary. Fuse Holders and Circuit Breaker located on rear of Conveyor.



WARNING!

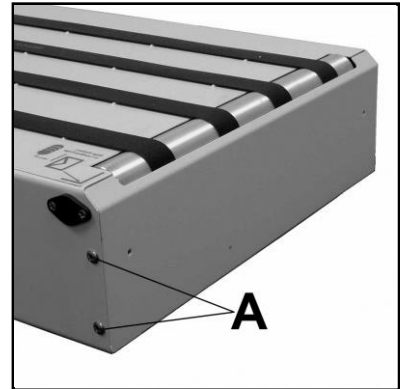
**DISCONNECT POWER CORD WHEN CHECKING OR REPLACING FUSE!
ALWAYS REPLACE FUSE WITH THE SAME TYPE.
FAILURE TO DO SO MAY DAMAGE ELECTRONIC CIRCUIT BOARD.**

USER GUIDE

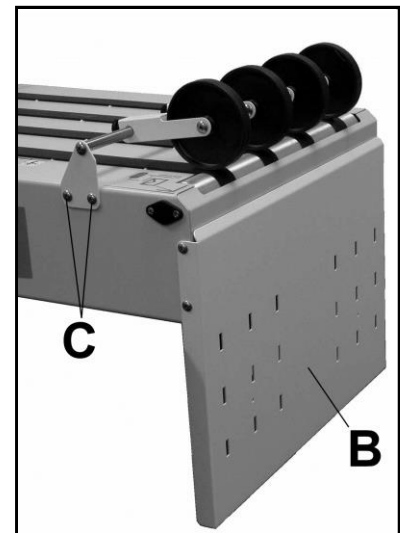
Optional DTM-255/DTM-250 Conveyor Drop Tray Installation

DTM-255 Drop Tray is for Left-to-Right Operation. DTM-250 Drop Tray is for Right-to-Left Operation. Assemble and install Conveyor Drop Tray on exit end of Conveyor:

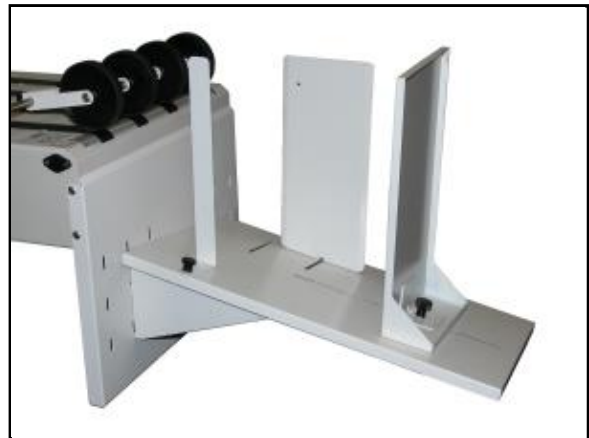
1. Remove two screws attaching Stacking Tray to Conveyor and remove Tray.
2. Remove four screws [A] that mount Front Cover Plate to Conveyor.
DO NOT remove Front Cover Plate.



3. While holding Front Cover Plate in place, install Drop Tray Support Bracket [B] using four screws removed in Step 2.
4. Install Media Guide Roller Assembly using four screws supplied [C]. Mount Media Guide Roller Assembly as shown with Rollers resting on Exit Roller of Conveyor.



5. Install Tray Base on Drop Tray Support Bracket.
Tray adjusts up and down to allow stacking more or less media.
6. Remove knobs from Guides.
Assemble Guides to Tray Base as shown. Largest Guide is the Rear Stop Guide. Second largest Guide is installed on non-operator's side of Conveyor and smallest Guide is installed on operator's side as shown.



USER GUIDE

Optional 57E-600-10 Conveyor Leg Kit Installation (for Use with M-Series Printers)

Install Conveyor Legs on the Conveyor to allow proper alignment with M-Series Printers.

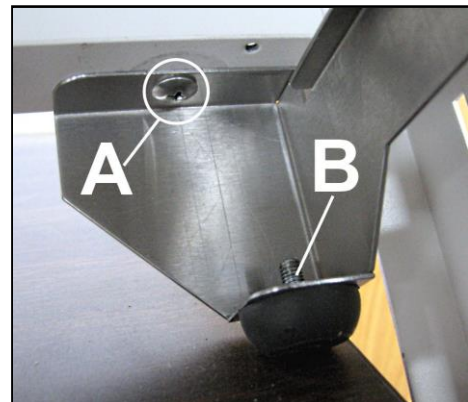
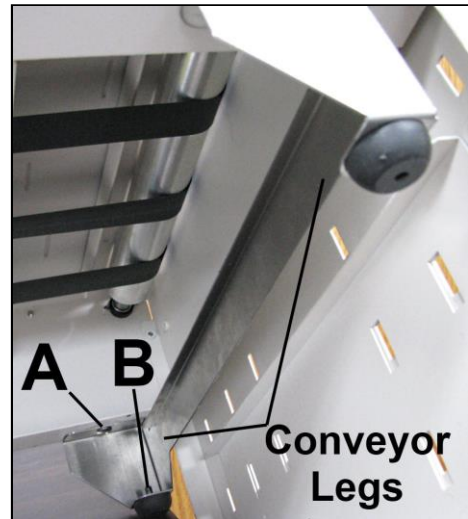
CONTENTS OF KIT:

1. Conveyor Legs (2)
2. Screws (4)



INSTALL CONVEYOR LEGS:

1. Remove (4) Rubber Feet from bottom of Conveyor.
2. Attach Conveyor Legs across the bottom front and rear of Conveyor using Rubber Foot holes [A] and four screws included with Kit.
3. Reattach Rubber Feet to Conveyor Legs using predrilled holes [B] provided.

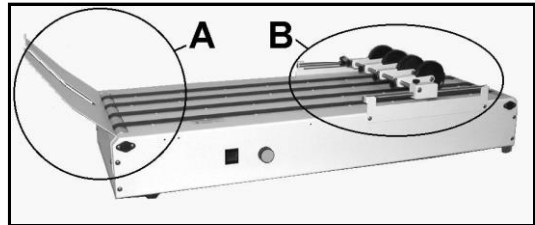


USER GUIDE

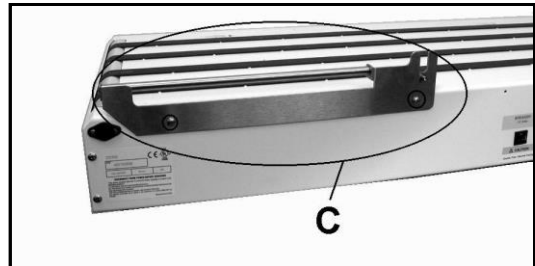
Optional DK-700 Dryer Kit

Dryer Kit Includes: Front Exit Roller Assembly, Guide Roller Support, Front Roller Support, Rear Roller Support, 2 Dryer Support Shafts, 8 mounting screws

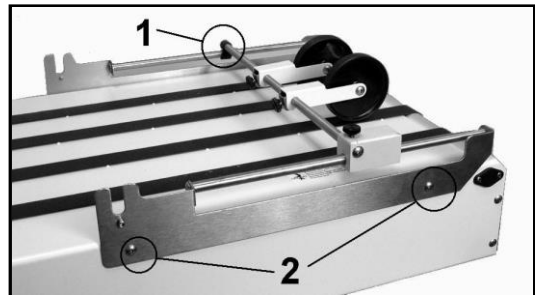
1. Before installing DK-700 Dryer Kit, remove these parts from the CDM-700 Conveyor.
 - A. Stacking Tray [A] (2 screws).
 - B. Guide Assembly [B] (4 screws).
Remove Operator's Side Bracket first, then the Rear Support Bracket.



2. Install new Rear Roller Support [C] using two screws (as shown).



3. Hook Guide Roller Support over the shaft on Rear Roller Support [1]. Install Front Roller Support using two screws [2] (as shown).



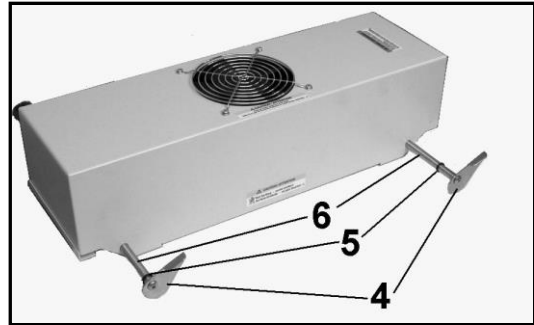
4. Install Front Exit Roller Assembly by attaching mounting brackets to Conveyor Frame (as shown) using two screws on each side [3].



USER GUIDE

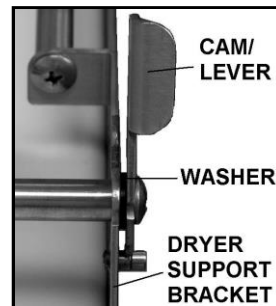
- Remove two Levers [4] and Bearing Washers [5] from two Dryer Support Shafts [6]. Install two Shaft Assemblies into holes provided in Dryer (*as shown*). Reinstall Levers [4] and Bearing Washers [5] on Shafts.

NOTE: When installing the two Levers [4], make sure the cams on the opposite end of the shaft are in the same position as the cams on the Levers.



- Dryer Assembly can now be placed in Support Brackets. Make sure Bearing Washers are between the Support Brackets and the cams (*as shown*).

NOTE: Bearing Washers should go between Support Brackets and cams.



- Plug cord supplied with Dryer into Dryer receptacle, then into receptacle labeled "Dryer" on the Conveyor. Then plug the Conveyor into the wall outlet.



- To operate the Dryer, set the two Levers so media can pass under the Dryer without interference. Then turn Dryer power switch ON. Turn Conveyor ON.

Dryer and Guide Rollers can be adjusted from side to side (*by sliding them on Shaft Assemblies*) to accommodate varying media sizes and print positioning.

NOTE: Dryer will not operate if Conveyor is not turned ON.



CAUTION

**DO NOT OPERATE DRYER IF BELTS ON CONVEYOR ARE NOT TURNING.
DO NOT BLOCK CONVEYOR EXIT WHEN USING DRYER.**

USER GUIDE

PARTS CATALOG

Parts Table of Contents

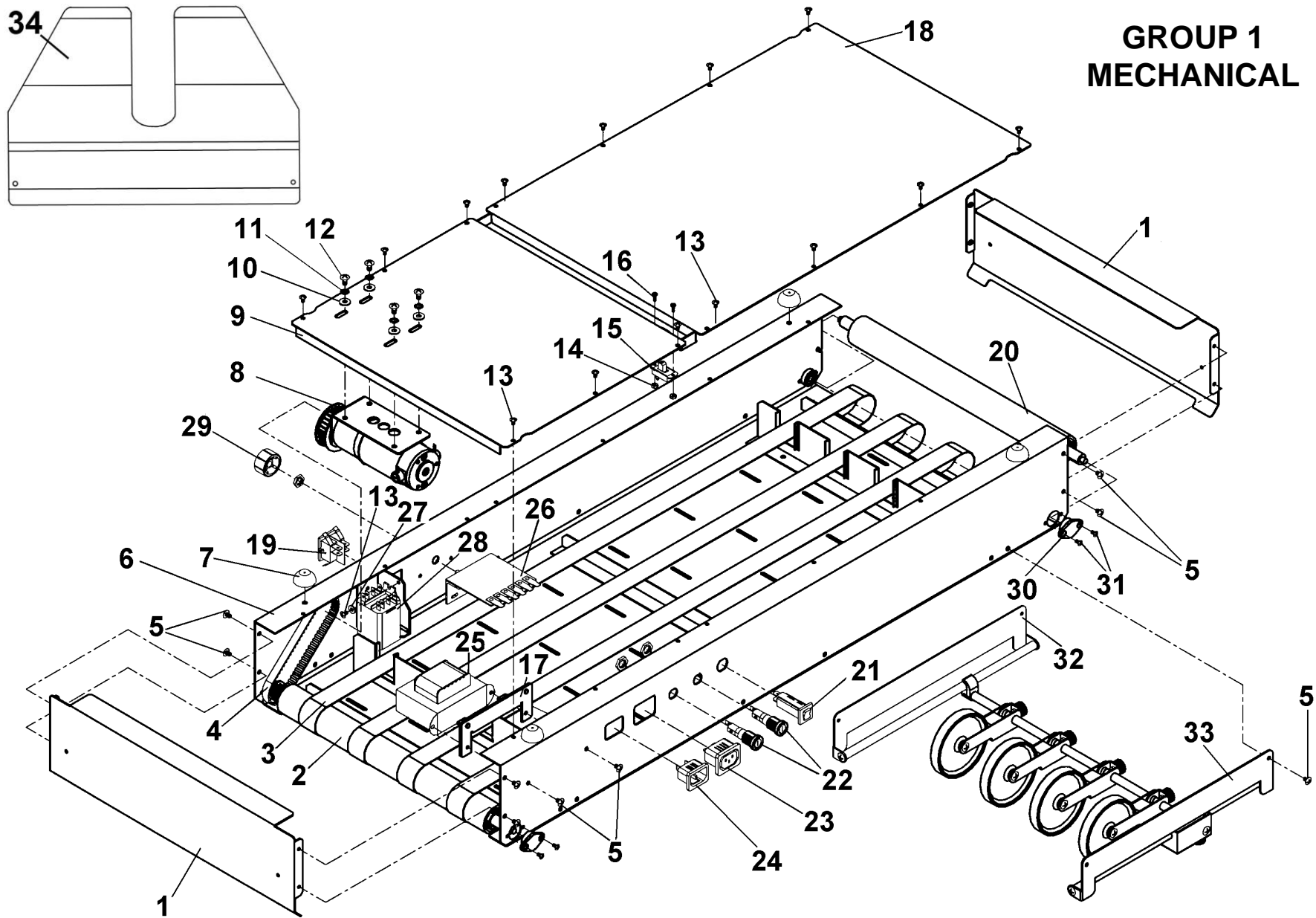
GROUP 1 – Mechanical	9
GROUP 2 – Electrical	11
GROUP 2A – Motor Drive	13
GROUP 3 – Labels	14
GROUP 4 – Wheel Guide and Bracket Assembly	15
GROUP 5 – DT-255 Drop Tray (R-L) (Optional)	16
GROUP 5A – Rear Wheel Guide & Bracket Assembly	17
GROUP 6 – DK-700 Dryer Kit Parts (Optional)	18
GROUP 7 – 115V Conveyor Electrical	20
GROUP 7A – 220V Conveyor Electrical	21
PARTS INDEX	22

NOTE: When you see a **Key number** repeated in a listing, check the voltage of your particular model:

- **Voltage: 115V or 220V**

PARTS CATALOG

GROUP 1 MECHANICAL



PARTS CATALOG

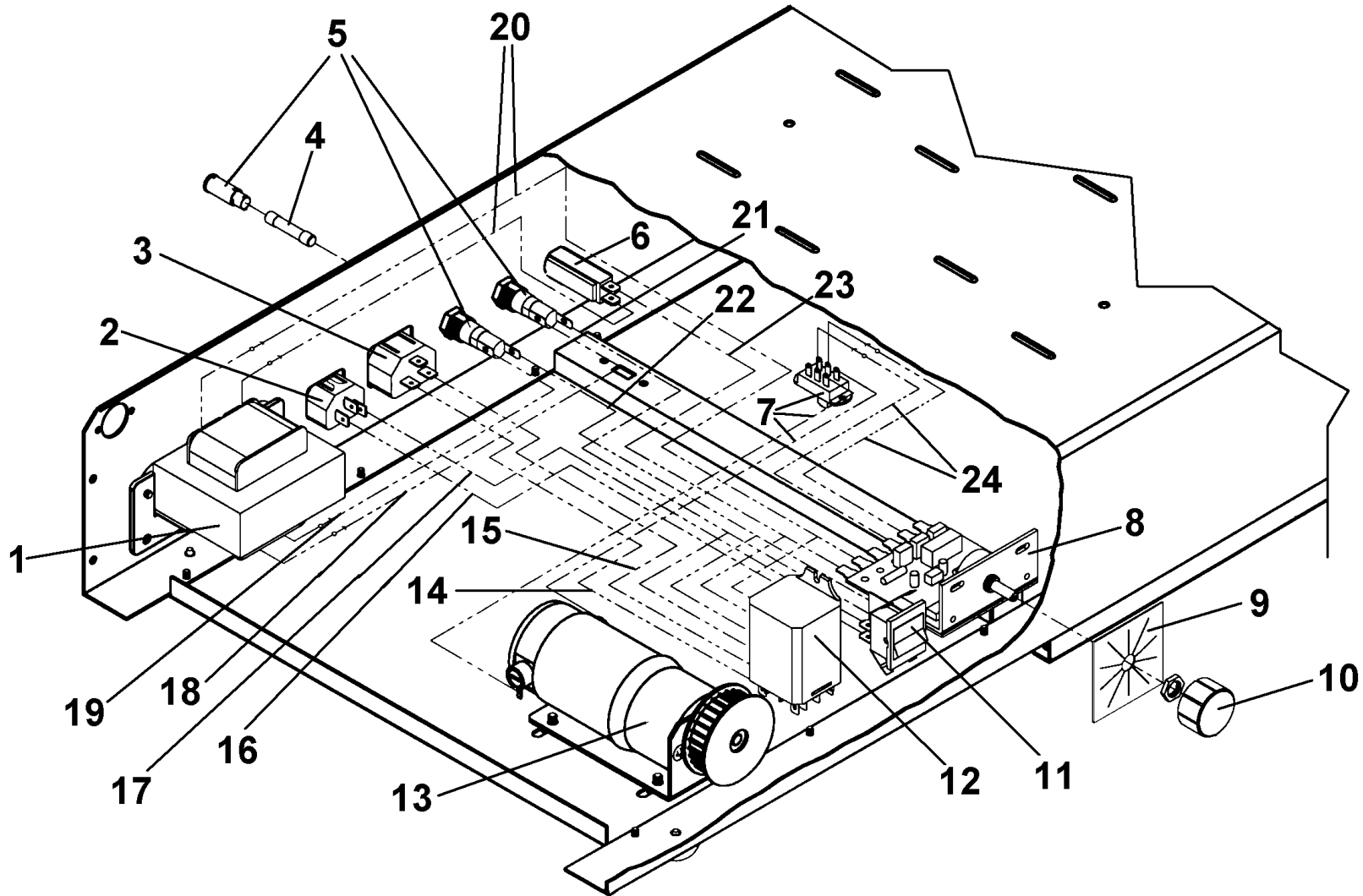
GROUP 1 – MECHANICAL

KEY	PART NO.	DESCRIPTION	QTY.
1.	57-150-08	END CAP, BODY CLOSURE	2
2.	57-100-15	DRIVE ROLLER ASSEMBLY	1
3.	123-0309	BELT, CONVEYOR DELIVERY	4
4.	123-0771	BELT, 120XL037 NEOPRENE CLASS	1
5.	123-1136	SCREW, 8-32 x 1/4 PH TRUSS HD	22
6.	57P-600-02	CONVEYOR BODY WELDMENT (115V)	1
6.	57P-610-02	CONVEYOR BODY WELDMENT (220V)	1
7.	123-0620	FOOT, #7OASHORA	4
8.	57-100-84	MOTOR ASSEMBLY	1
9.	57-150-42	MOTOR BASE	1
10.	123-0100	WASHER, 1/2 x 0.218 x 0.048 THK	4
11.	123-0237	STAR-WASHER, #10 EXTERNAL	4
12.	123-0024	SCREW, 10-32 x 3/8 PH TRUSS HD. MS ZINC	4
13.	123-1135	SCREW, 6-32 x 1/4 PH TRUSS HD.	15
14.	123-0425	NUT, HEX 4-40	2
15.	57-500-04	SWITCH ASSEMBLY	1
16.	123-1023	SCREW, 4-40 x 5/16 RH PH	2
17.	57-100-50	BRACKET, TRANSFORMER	1
18.	57-150-43	COVER	1
19.	123-1103	SWITCH	1
20.	57-100-17	IDLER ROLLER	3

KEY	PART NO.	DESCRIPTION	QTY.
21.	123-1104	CIRCUIT BREAKER	1
22.	123-0355	FUSE HOLDER	2
23.	57-500-01	AC OUTLET ASSEMBLY	1
24.	57-500-03	AC INLET ASSEMBLY (115V)	1
24.	57-500-21	FILTER, POWER ENTRY MODULE (220V)	1
25.	57-500-02	TRANSFORMER (115V, 60Hz)	1
25.	57-500-16	TRANSFORMER (220V, 50/60Hz)	1
26.	57-500-13	SPEED CONTROL	1
27.	123-0191	WASHER, PLAIN #6	1
28.	123-1106	RELAY	1
29.	123-1101	KNOB, PURE TOUCH	1
30.	90-103-52	BALL BEARING HOUSING ASSEMBLY	8
31.	123-0275	SCREW, 6-32 x 1/4 OVAL PH. HD.	16
32.	57-601-03	WHEEL BRACKET ASSY. (SEE GROUP 4)	1
33.	57-601-01	WHEEL GUIDE & BRACKET ASSEMBLY (SEE GROUP 4)	1
34.	57P-601-16	RECEIVING TRAY	1
35.	123-0635*	POWER CORD (115V)	1
35.	123-0735*	POWER CORD (220V)	1
36.	57-550-25*	DECAL, POWER ENTRY 115V	1
36.	57-550-30*	DECAL, POWER ENTRY 220V	1
*	DT-255	DROP TRAY KIT, RIGHT-TO-LEFT (SEE PAGE 3) (SEE GROUP 6)	1
*	DT-250	DROP TRAY KIT, LEFT-TO-RIGHT (SEE PAGE 3) (SEE GROUP 6A)	1
*	57E-600-10	CONVEYOR LEG KIT FOR USE WITH M-SERIES PRINTERS (SEE PAGE 4)	1
*NOT SHOWN			

PARTS CATALOG

GROUP 2 – ELECTRICAL



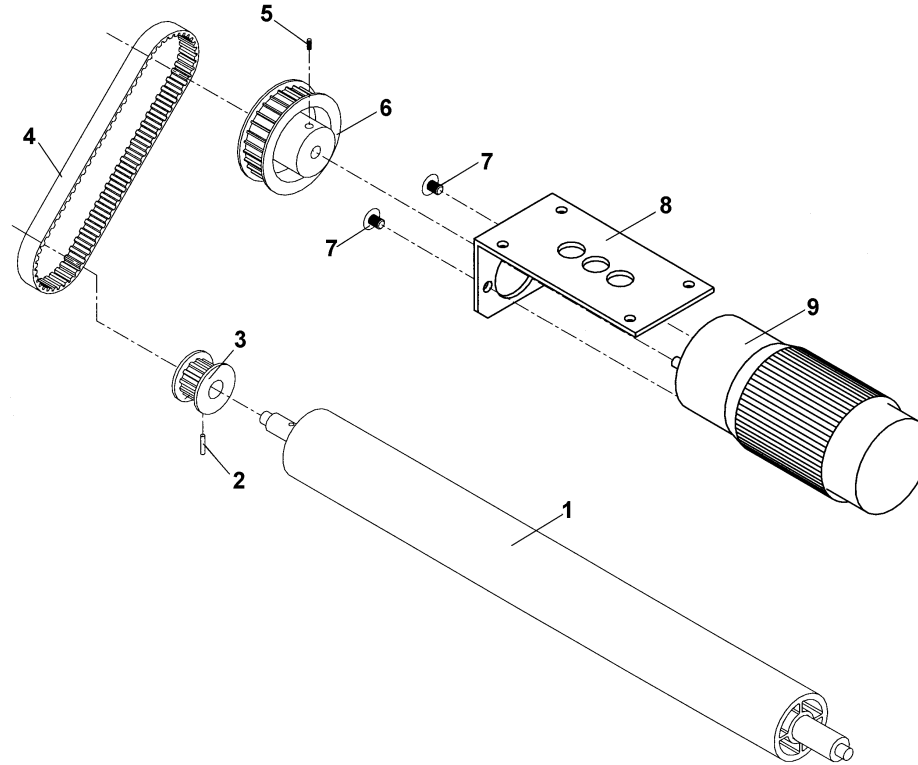
PARTS CATALOG

GROUP 2 – ELECTRICAL

KEY	PART NO.	DESCRIPTION	QTY.
1.	57-500-02	TRANSFORMER (115V, 60Hz)	1
1.	57-500-16	TRANSFORMER (220V, 50-60Hz)	1
2.	57-500-03	AC/INLET ASSEMBLY (115V)	1
2.	57-500-21	FILTER, POWER ENTRY MODULE (220V)	1
3.	57-500-01	AC/OUTLET ASSEMBLY	1
4.	123-0680	FUSE, .5A 250V (3AG) #313.500 (115V)	2
4.	123-1179	FUSE, .3A SLOW BLOW, #313.300 (220V)	2
5.	123-0355	FUSE HOLDER	2
6.	123-1104	CIRCUIT BREAKER	1
7.	57-500-04	SWITCH ASSEMBLY	1
8.	57-500-13	SPEED CONTROL ASSEMBLY	1
9.	57-550-20	INDICATOR PLATE	1
10.	123-1101	KNOB, PURE TOUCH	1
11.	123-1103	SWITCH	1
12.	123-1106	RELAY	1
13.	57-100-84	MOTOR ASSEMBLY, 24 V DC	1
14.	57-500-15	WIRE HARNESS, AC/OUTLET	1
15.	57-500-11	WIRE HARNESS, AC/OUTLET	1
16.	57-500-07	WIRE HARNESS, AC/INTLET	1
17.	57-500-10	WIRE HARNESS, FUSE	1
18.	57-500-08	WIRE HARNESS, FUSE	1
19.	57-500-05	WIRE HARNESS, FUSE	1
20.	57-500-17	WIRE HARNESS, TRANSFORMER-SPEED CONTROL	1
21.	57-500-12	WIRE HARNESS, A/C OUTLET	1
22.	57-500-06	WIRE HARNESS, A/C OUTLET	1
23.	57-500-14	WIRE HARNESS, FUSE	1
24.	57-500-09	WIRE HARNESS ASSEMBLY, MOTOR	1

PARTS CATALOG

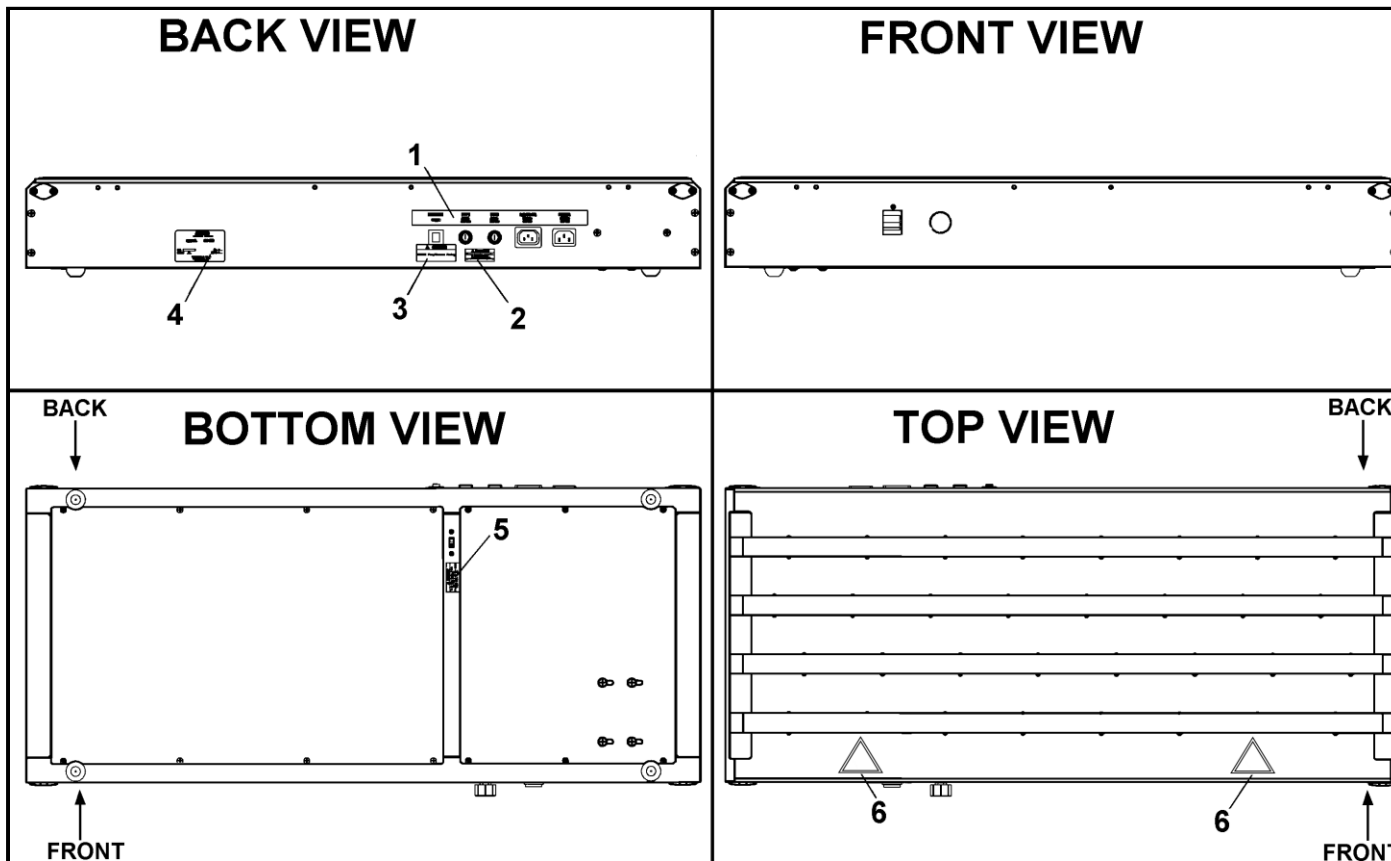
GROUP 2A – MOTOR DRIVE



KEY	PART NO.	DESCRIPTION	QTY.
1.	57-100-16	DRIVE ROLLER	1
2.	123-0036	ROLL PIN	1
3.	57-100-80	PULLEY, 12XLO	1
4.	123-0771	BELT, 120XLO31	1
5.	123-0322	SET SCREW, 8-32 x 1/4	1
6.	57-100-78	MOTOR PULLEY, 28 TEETH	1
7.	123-0017	SCREW, 10-32 x 1/4 PH TRUSS HD.	2
8.	CD-301-06	MOTOR BRACKET	1
9.	57-100-85	MOTOR	1

PARTS CATALOG

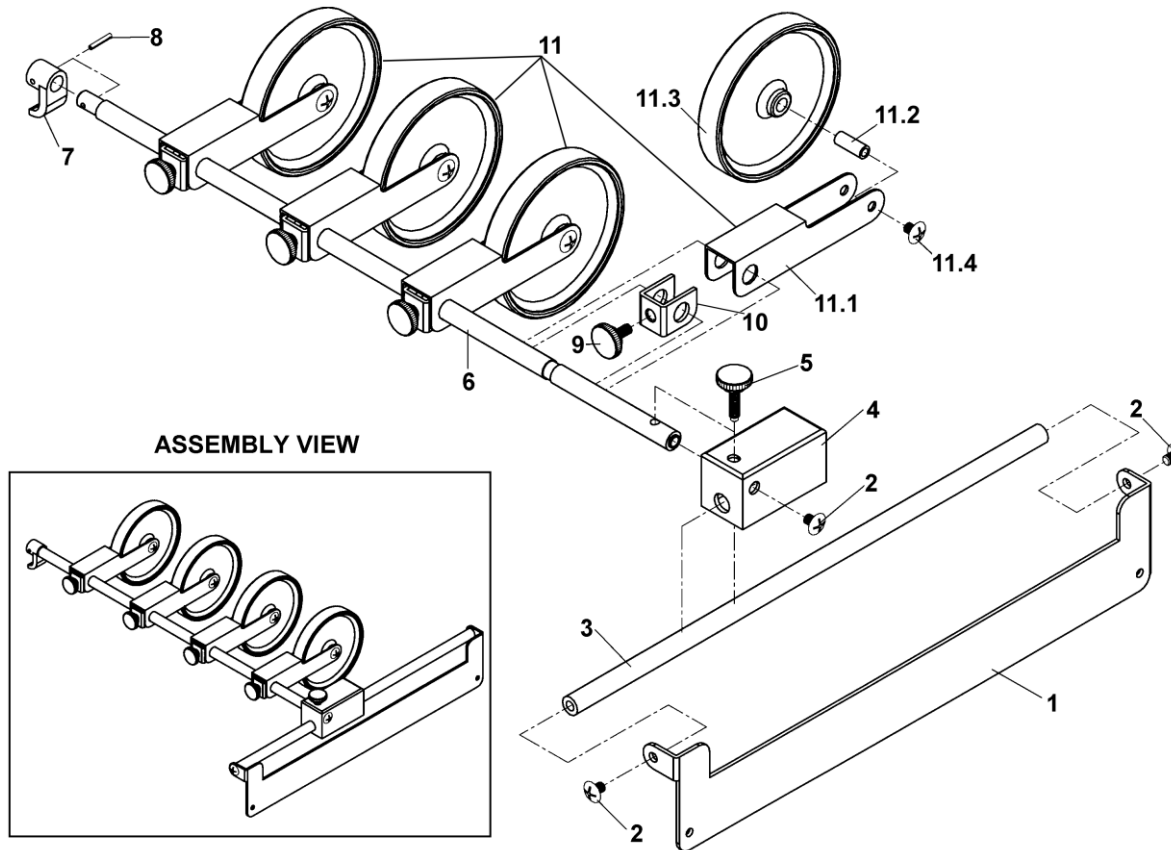
GROUP 3 – LABELS



KEY	PART NO.	DESCRIPTION	QTY.
1.	57-550-25	DECAL, POWER ENTRY (115V)	1
1.	57-550-30	DECAL, POWER ENTRY (220V)	1
2.	123-1033	LABEL, CAUTION DISCONNECT POWER	1
3.	123-1115	LABEL, CAUTION/ DOUBLE POLE	1
4.	123-1962	DECAL, DATA PLATE GENERIC	1
5.	123-1121	LABEL, CAUTION REVERSE SWITCH	1
6.	123-2597	LABEL, CAUTION EXPOSED ROLLER	2

PARTS CATALOG

GROUP 4 – WHEEL GUIDE AND BRACKET ASSEMBLY

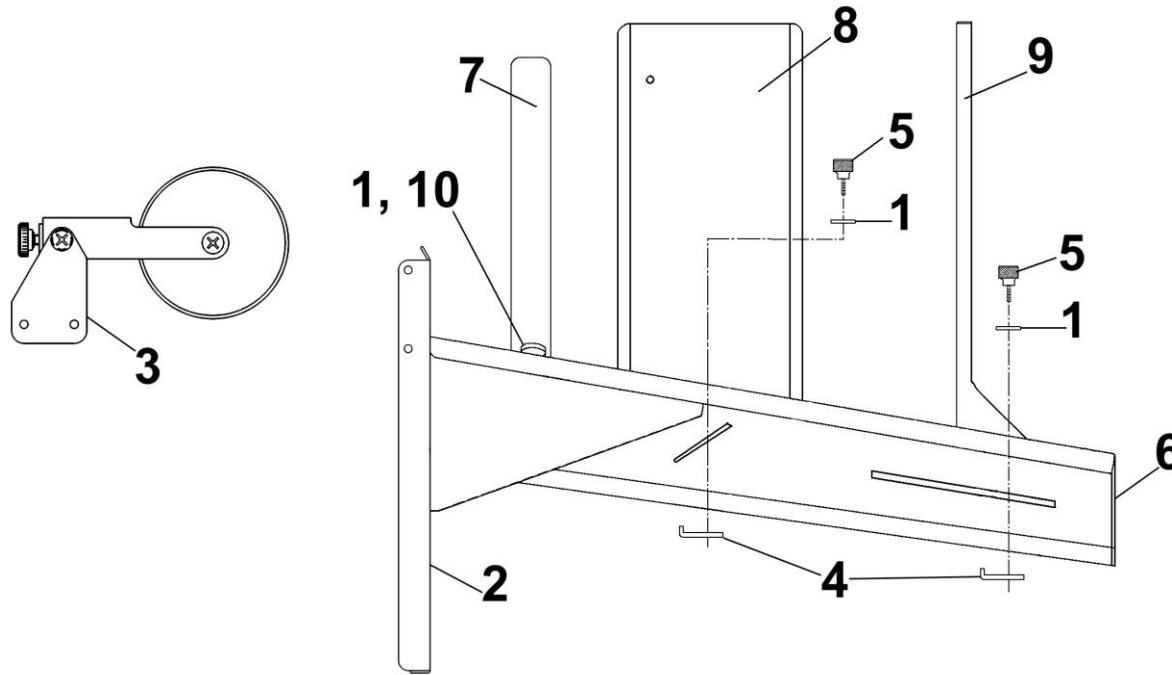


KEY	PART NO.	DESCRIPTION	QTY.
1.	57P-601-11	WHEEL BRACKET	2
2.	123-0017	SCREW, 10-32 x 1/4 PH TRUSS HD.	3
3.	57-601-10	ROD	2
4.	57-150-27	BRACKET	1
5.	57-100-19	THUMBSCREW	1
6.	57-601-06	WHEEL GUIDE SHAFT	1
7.	57-100-28	SHAFT BRACKET	1
8.	123-0695	SPRING PIN, 3/32 x 1/2	1

KEY	PART NO.	DESCRIPTION	QTY.
9.	95-105-19	MEDIA GUIDE KNOB ASSEMBLY	4
10.	57-601-13	FORK	4
11	57P-601-05	WHEEL ASSEMBLY	4
11.1	57-150-37	WHEEL ARM WELDMENT	4
11.2	57-100-30	WHEEL SHAFT	4
11.3	CD-300-21	STACKER WHEEL	4
11.4	123-0017	SCREW, 10-32 x 1/4 PH TRUSS HD.	8

PARTS CATALOG

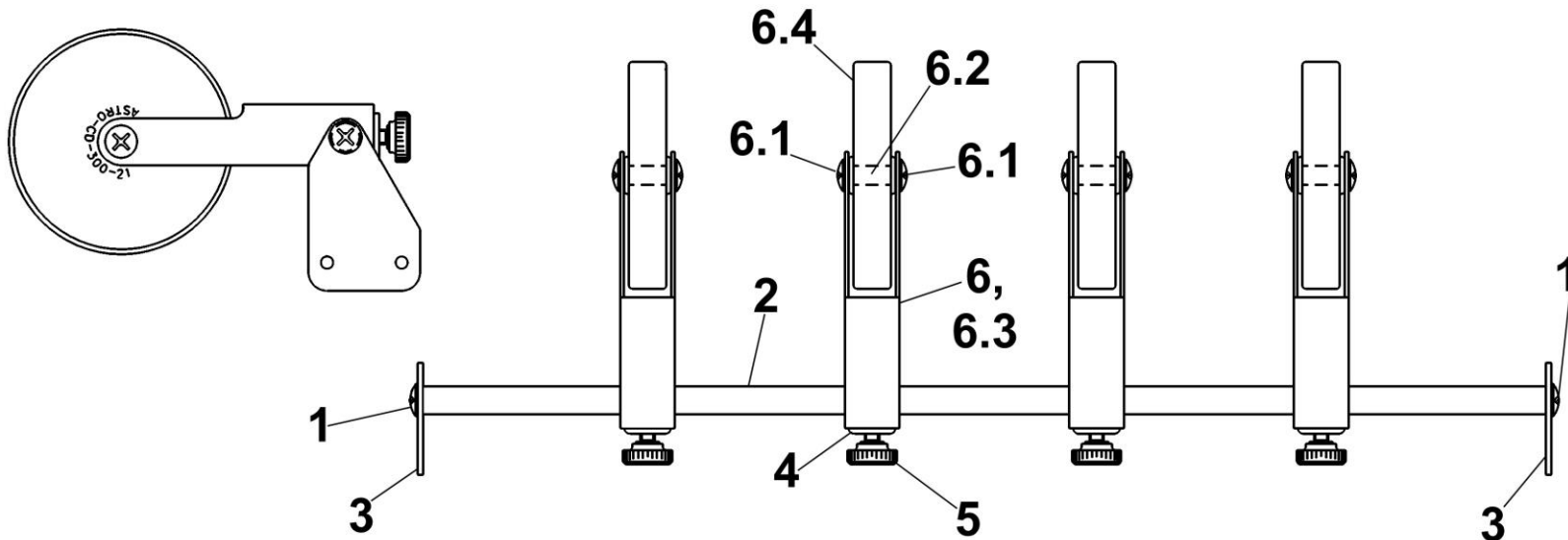
GROUP 5 – DT-255 LEFT-TO-RIGHT DROP TRAY (OPTIONAL)



KEY	PART NO.	DESCRIPTION	QTY.
1.	123-0068	WASHER, #10 PLAIN, SS 18-8	3
2.	57P-602-04	DROP TRAY BASE	1
3.	57P-602-01	WHEEL GUIDE AND BRACKET ASSEMBLY (<i>SEE GROUP 6B</i>)	1
4.	29-400-16	NUT	2
5.	29-400-28	KNOB ASSEMBLY, 10-32 x 1/2	2
6.	25P-252-09	DROP TRAY PLATFORM	1
7.	25P-252-17	MEDIA GUIDE	1
8.	25P-252-20	SIDE GUIDE ASSEMBLY	1
9.	25P-252-22	STOPPER ASSEMBLY	1
10.	94-104-06	KNOB, METERING BRACKET	1

PARTS CATALOG

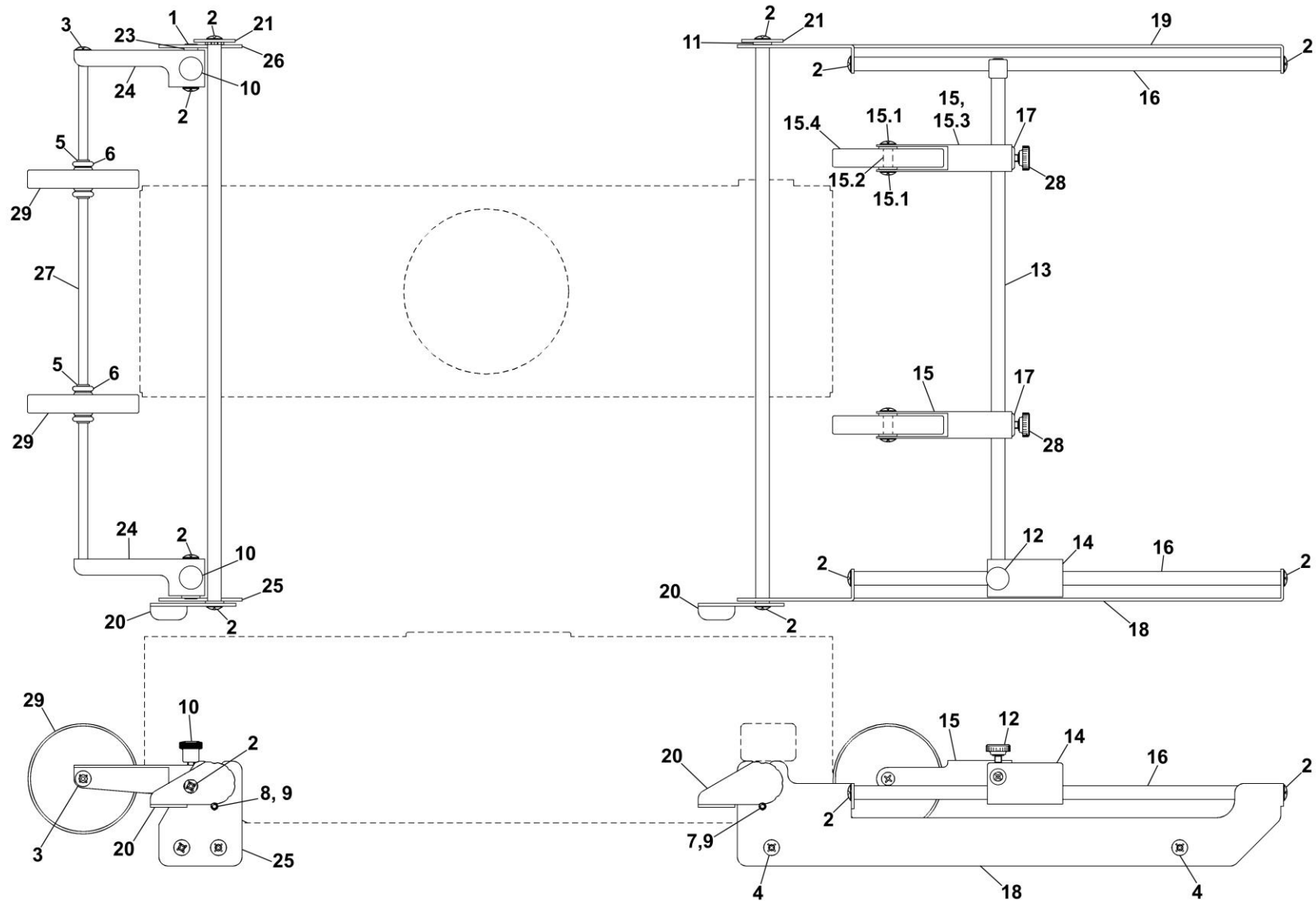
GROUP 5A – DT-255 REAR WHEEL GUIDE AND BRACKET



KEY	PART NO.	DESCRIPTION	QTY.
	57P-602-01	WHEEL GUIDE AND BRACKET ASSEMBLY	1
1.	123-0017	SCREW, 10-32 x 1/4 PH TRUSS HD.	2
2.	57-602-10	WHEEL ROD	1
3.	57P-602-11	BRACKET	2
4.	57-601-13	FORK	4
5.	95-105-19	MEDIA GUIDE KNOB ASSEMBLY	4
6.	57P-601-05	WHEEL ASSEMBLY	4
6.1	123-0017	SCREW, 10-32 x 1/4 PH TRUSS HD.	8
6.2	57-100-30	WHEEL SHAFT	4
6.3	57-150-37	WHEEL ARM WELDMENT	4
6.4	CD-300-21	STACKER WHEEL	4

PARTS CATALOG

GROUP 6 – DK-700 DRYER KIT PARTS (OPTIONAL)



PARTS CATALOG

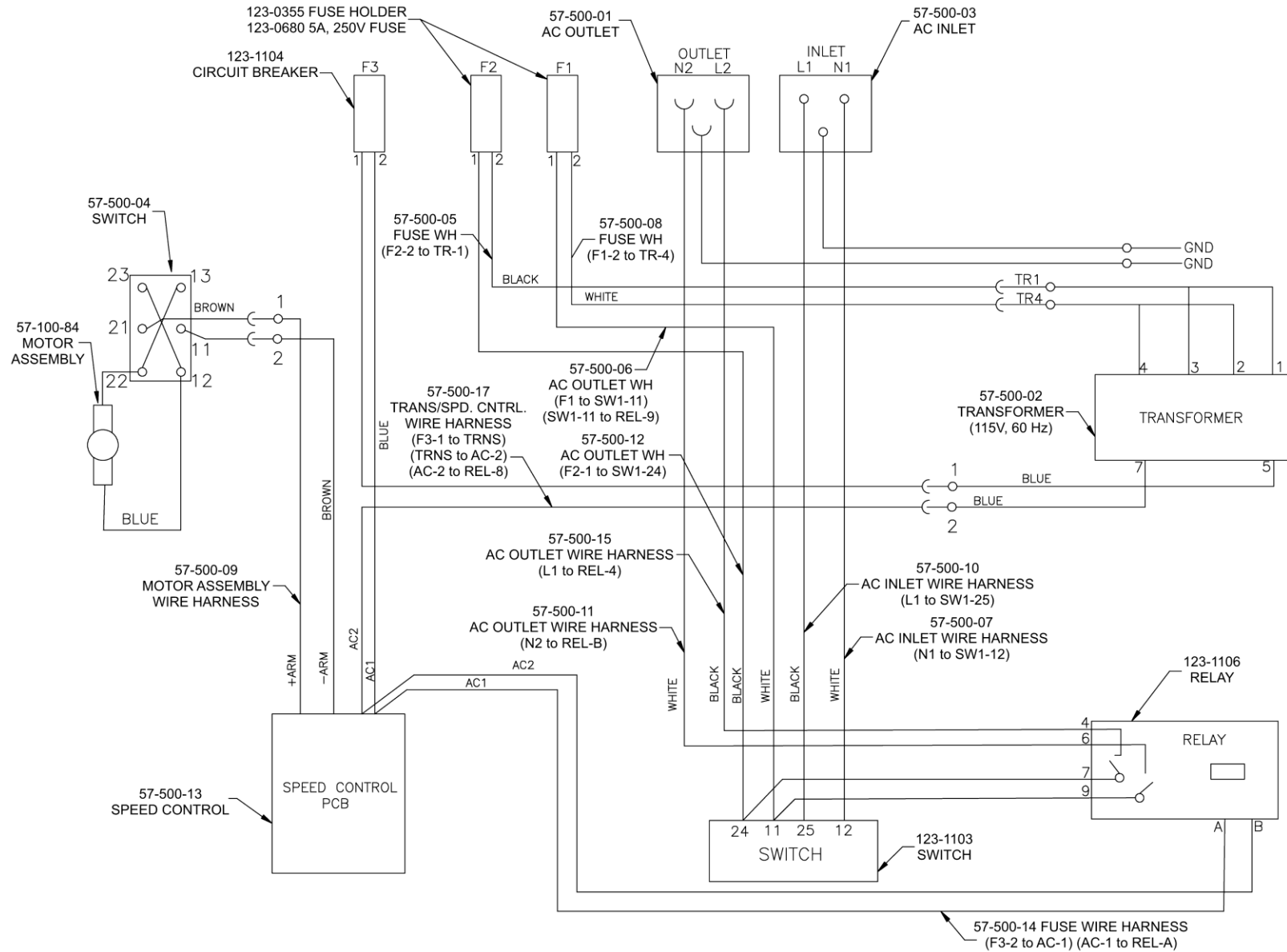
GROUP 6 – DK-700 DRYER KIT PARTS (OPTIONAL)

KEY	PART NO.	DESCRIPTION	QTY.
1.	123-0002	SCREW, 10-32 x 3/8 PH UNDERCUT SS	2
2.	123-0017	SCREW, 10-32 x 1/4 PH TRUSS HD.	10
3.	123-1135	SCREW, 6-32 x 1/4 PH TRUSS HD.	2
4.	123-1136	SCREW, 8-32 x 1/4 PH TRUSS HD.	8
5.	123-1986	BEARING CLIP	4
6.	123-1987	O-RING	4
7.	123-2067	SCREW, 6-32 x 5/16 SOC. HD. CAP	2
8.	123-2078	SCREW, 6-32 SOC. HD.	2
9.	20-100-38	SPACER	4
10.	24-101-11	THUMBSCREW, 10-32	2
11.	32-110-48	SPACER	6
12.	57-100-19	THUMBSCREW	1
13.	57-100-25	WHEEL GUIDE SHAFT	1
14.	57-150-27	BRACKET	1
15.	57P-601-05	WHEEL ASSEMBLY	2
15.1	123-0017	SCREW, 10-32 x 1/4 PH TRUSS HD.	4
15.2	57-100-30	WHEEL SHAFT	2
15.3	57-150-37	WHEEL ARM WELDMENT	2
15.4	CD-300-21	STACKER WHEEL	2

KEY	PART NO.	DESCRIPTION	QTY.
16.	57-601-10	WHEEL ROD	2
17.	57-601-13	FORK	4
18.	57-603-08	FRONT WHEEL BRACKET	1
19.	57-603-09	REAR WHEEL BRACKET	1
20.	57-603-12	HEIGHT ADJUSTMENT ARM	2
21.	57-603-13	HEIGHT ADJUSTMENT WHEEL	2
22.	57-603-15	WHEEL ROD	2
23.	57-603-16	STUD	2
24.	57-603-21	EXIT WHEEL ARM	1
25.	57-603-23	EXIT WHEEL BRACKET, L/H	1
26.	57-603-24	EXIT WHEEL BRACKET, R/H	1
27.	57-603-26	WHEEL ROD	1
28.	95-105-19	MEDIA GUIDE KNOB ASSEMBLY	2
29.	CD-300-21	STACKER WHEEL	2

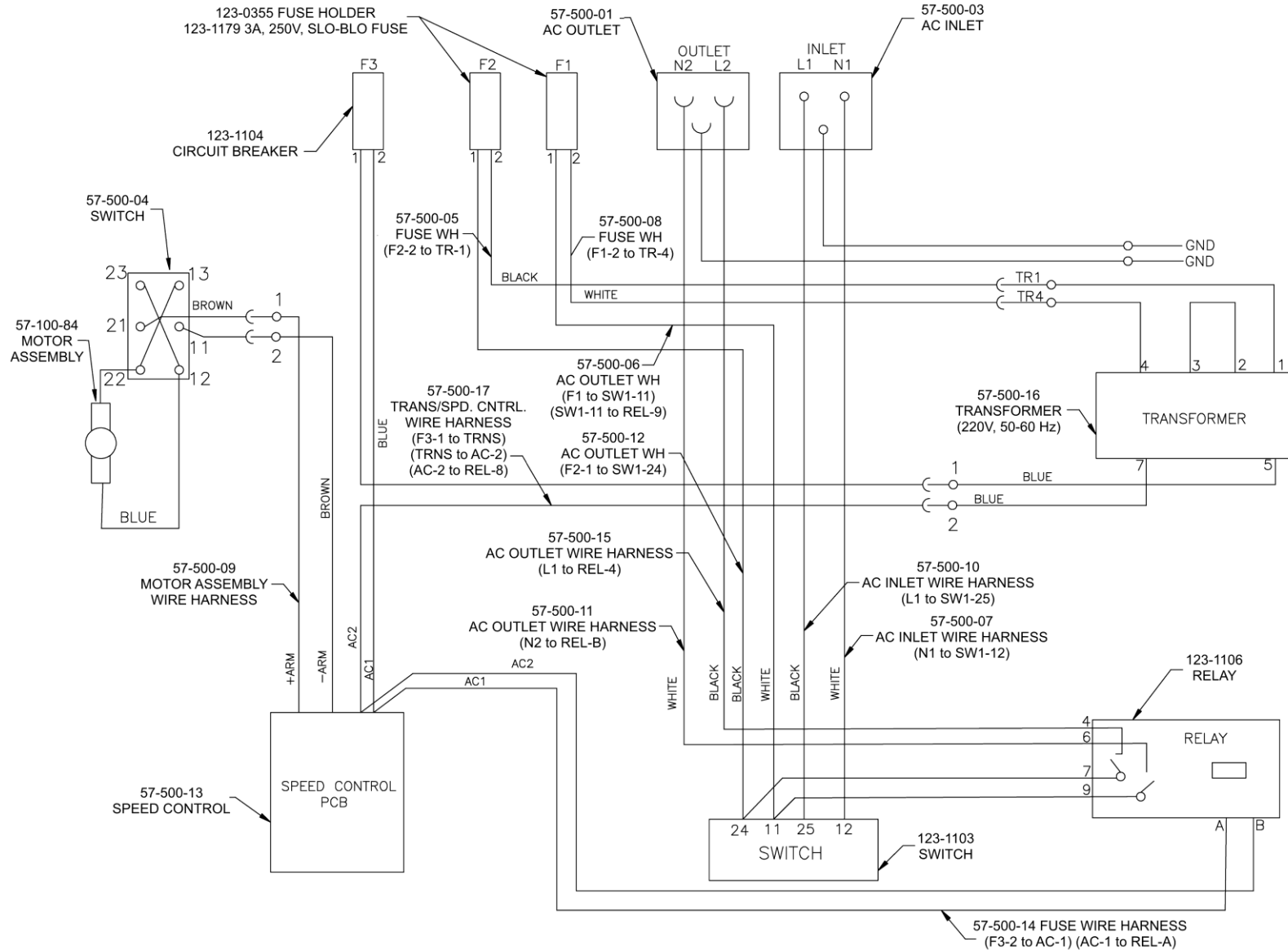
PARTS CATALOG

GROUP 7 – 115V CONVEYOR ELECTRICAL



PARTS CATALOG

GROUP 7A – 220V CONVEYOR ELECTRICAL



PARTS INDEX

PART NO.	GROUP	KEY	PART NO.	GROUP	KEY	PART NO.	GROUP	KEY
123-0002	6	1	123-2067	6	7	57-500-09	2	24
123-0017	4	2	123-2078	6	8	57-500-10	2	17
123-0017	2A	7	123-2597	3	6	57-500-11	2	15
123-0017	5A	1	20-100-38	6	9	57-500-12	2	21
123-0017	5A	6.1	24-101-11	6	10	57-500-13	2	8
123-0017	6	2	25P-252-09	5	6	57-500-14	2	23
123-0017	6	15.1	25P-252-17	5	7	57-500-15	2	14
123-0024	1	12	25P-252-20	5	8	57-500-16	1	25
123-0036	2A	2	25P-252-22	5	9	57-500-16	2	1
123-0068	5	1	32-110-48	6	11	57-500-17	2	20
123-0100	1	10	29-400-16	5	4	57-500-21	1	24
123-0191	1	27	29-400-28	5	5	57-500-21	2	2
123-0237	1	11	57-100-15	1	2	57-550-20	2	9
123-0275	1	31	57-100-16	2A	1	57-550-25	1	36
123-0309	1	3	57-100-17	1	20	57-550-25	3	1
123-0322	2A	5	57-100-19	4	5	57-550-30	1	36
123-0355	1	22	57-100-19	6	12	57-550-30	3	1
123-0355	2	5	57-100-25	6	13	57-601-01	1	33
123-0425	1	14	57-100-28	4	7	57-601-03	1	32
123-0620	1	7	57-100-30	4	9.4	57-601-06	4	6
123-0635	1	35	57-100-30	5A	6.2	57-601-10	4	3
123-0680	2	4	57-100-30	6	15.2	57-601-10	6	16
123-0695	4	8	57-100-50	1	17	57-601-13	4	9.2
123-0735	1	35	57-100-78	2A	6	57-601-13	5A	4
123-0771	1	4	57-100-80	2A	3	57-601-13	6	17
123-0771	2A	4	57-100-84	1	8	57-602-10	5A	2
123-1023	1	16	57-100-84	2	13	57-603-08	6	18
123-1033	3	2	57-100-85	2A	9	57-603-09	6	19
123-1081	1	26	57-150-08	1	1	57-603-12	6	20
123-1101	1	29	57-150-27	4	4	57-603-13	6	21
123-1101	2	10	57-150-27	6	14	57-603-15	6	22
123-1103	1	19	57-150-37	4	9.3	57-603-16	6	23
123-1103	2	11	57-150-37	5A	6.3	57-603-21	6	24
123-1104	1	21	57-150-37	6	15.3	57-603-23	6	25
123-1104	2	6	57-150-42	1	9	57-603-24	6	26
123-1106	1	28	57-150-43	1	18	57-603-26	6	27
123-1106	2	12	57-500-01	1	23	57E-600-10	1	--
123-1115	3	3	57-500-01	2	3	57P-600-02	1	6
123-1117	3	1	57-500-02	1	25	57P-601-05	4	11
123-1121	3	5	57-500-02	2	1	57P-601-05	5A	6
123-1135	1	13	57-500-03	1	24	57P-601-05	6	15
123-1135	6	3	57-500-03	2	2	57P-601-11	4	1
123-1136	1	5	57-500-04	1	15	57P-601-16	1	34
123-1136	6	4	57-500-04	2	7	57P-602-01	5	3
123-1179	2	4	57-500-05	2	19	57P-602-01	5A	--
123-1962	3	4	57-500-06	2	22	57P-602-04	5	2
123-1986	6	5	57-500-07	2	16	57P-602-04	5A	2
123-1987	6	6	57-500-08	2	18	57P-610-02	1	6

PARTS INDEX

PART NO.	GROUP	KEY
90-103-52	1	30
94-104-06	5	10
95-105-19	4	9.1
95-105-19	5A	5
95-105-19	6	28
CD-300-21	4	9.5
CD-300-21	5A	6.4
CD-300-21	6	15.4
CD-300-21	6	29
CD-301-06	2A	8
DT-250	1	--
DT-255	1	--
DT-255	5	--

Copyright © 2018 Astro Machine Corporation
Elk Grove Village, Illinois 60007
06/22/2018

Part Number: 200-CD700 Rev H