

8 Reading

Introduction

Code Types

The reading option allows the system to read special codes that are printed on the documents. The code contains information about the processing of the documents.

The system can read the following code types:

- OCR: Optical Character Recognition; the system can scan an area of the document for page number information in the page "n of m" (n/m) format
- BCR 1D: One dimensional barcode
- BCR 2D: Two dimensional barcodes
- OMR: 1-track Optical Mark Recognition
- Flex 1-9: Optional translation to support non standard OMR and BCR coding

Depending on the settings, the code tells the system if:

- The document set is complete
- Enclosures must be added to the set
- The system must stop
- The set is complete (no pages are missing)
- The envelopes are transported to the side exit or to the stacker

The sheets with the printed code are placed in a feeder. Depending on the programmed code, the other feeders can be used as selective feeders to add enclosures. In case of a Z-fold, the address has to be printed on the last page of the set. With the other fold types, the first sheet of a set always contains the address. A full length code is printed on every sheet of a set. The code must appear at the same location on every page regardless of the actual code length.

The code on the last sheet of the set contains the insert instruction. The other sheets carry the accumulate instruction. If the "page n of m" code is used with BCR or OCR, the set will be inserted when n equals m.

General Requirements for Printing Codes

If you print documents for reading:

- Make sure the ribbon or toner quality is sufficient.
- Print the code in black on white background.
- Codes on the same sheet must have equal intensity.
- Print the code at the same position on every sheet.
- Be aware of "background noise". The reading function can be disturbed by: color changes on the form, background design and a logo or copy on the opposite side of the sheet that will bleed through.
- For matrix printers near letter quality (NLQ) printed characters are preferred to obtain maximum blackness (double strike).



For more information on how to print a reading code on your document, contact your service organization.

OCR Code Description

With OCR page n / m (page n of m) you can print human readable characters on your mail set, which can be read by the system, to insert your mail set. The system can recognize the characters in the so called "n / m" format.

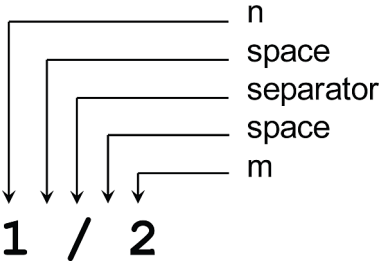
If the value of n is smaller than the value m the sheet will be accumulated, if the value of n is the same as the value of m the set will be inserted; m is the total number of pages and n is the current page.

Some specifications for OCR page n / m:

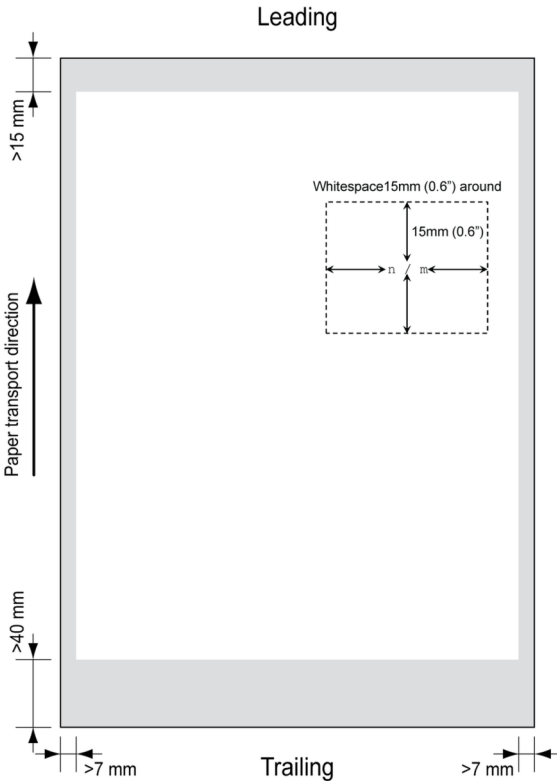
| | |
|-----------------------------|--|
| Supported fonts / font size | Times New Roman, Arial, Helvetica, Courier. Italic text will not be supported, bold not recommended. |
| Character size | 12 point dotpitch |
| Supported layouts | n / m (n,space,/,space,m) Both n and m need to be in the text, n first. |
| Print Quality | 600 dpi (preferable) |
| Clear Area | 15 mm (minimal), around |
| Color Background | White |
| Print drift | +/- 2 mm (max.) |

| | |
|-----------|---|
| Positions | Only one region of interest per job Only horizontal text (portrait) supported All text on the same line |
|-----------|---|

Example:



Position of the code on the document (example)





BCR Code Description

Bar codes are used for mail sets that are processed in Document Systems. The bar codes tell the system if:

- The document set is complete
- The envelope should be sealed
- Enclosures should be added
- Etc.

Barcode can be printed vertically and horizontally. Two types of barcodes are supported, 1D and 2D barcodes (depending on installed licenses).

Supported 1D barcodes

- Code 39



- Interleaved 2 of 5



- Minimum line thickness of a bar: 0.25 mm (0.01 inch)
- The thickness ratio of thick bars versus thin bars: 2:2
- Minimum width of the barcode: 5 mm (0.2 inch)
- The white area in the picture shows the limits where the code can be printed



Code 128 is not supported. It may work but it is not recommended because it is very sensitive to speed variations.

Supported 2D barcodes

Datamatrix



- Minimum cell size 0.35mm (0.014")
- Label size 30mm (1.18") square max
- Preferred print quality 600dpi
- Print drift from page to page +/-2mm max
- Colour background: White
- Minimum white space 6.5mm (0.26")
- Datamatrix can be read in all directions.

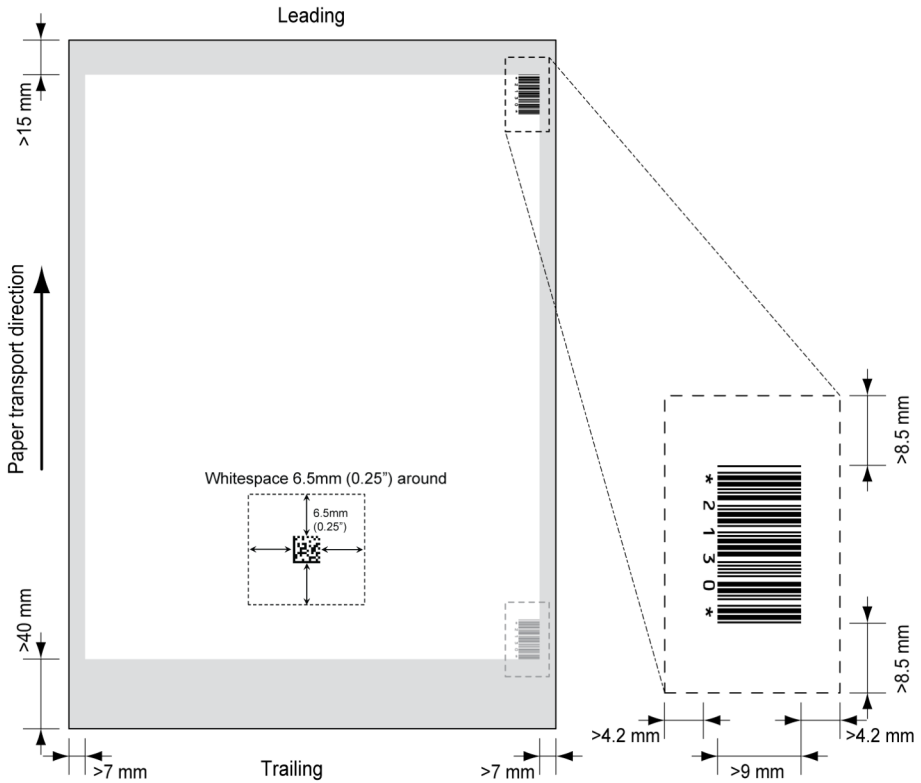


PDF 417

- Bar width 0.35mm (0.014") min
- Preferred print quality 600dpi
- Print drift from page to page +/-2mm max
- Colour background: White
- Minimum white space 6.5mm (0.26")

Printing contrast The label must be strongly printed in black on white background for maximum contrast. Other light backgrounds may be acceptable, subject to test.

Position of the code on the document



BCR license types

There are two BCR license types:

- Basic
- Advanced

BCR basic license

For the BCR basic license the following functions are available:

- Page N of M: as long as N is below M, the document set is not complete. As soon as $N=M$, the set is complete and will be inserted into an envelope.
- Insert/Accumulate: defines when a document set is complete and must be inserted into an envelope.
- Customer ID: BCR uses the Customer ID code to complete a set. If the ID changes, the set is inserted. This is only possible with reverse reading.

At least one basic commands is required. Page N of M can be used in combination with Customer ID as an integrity check.

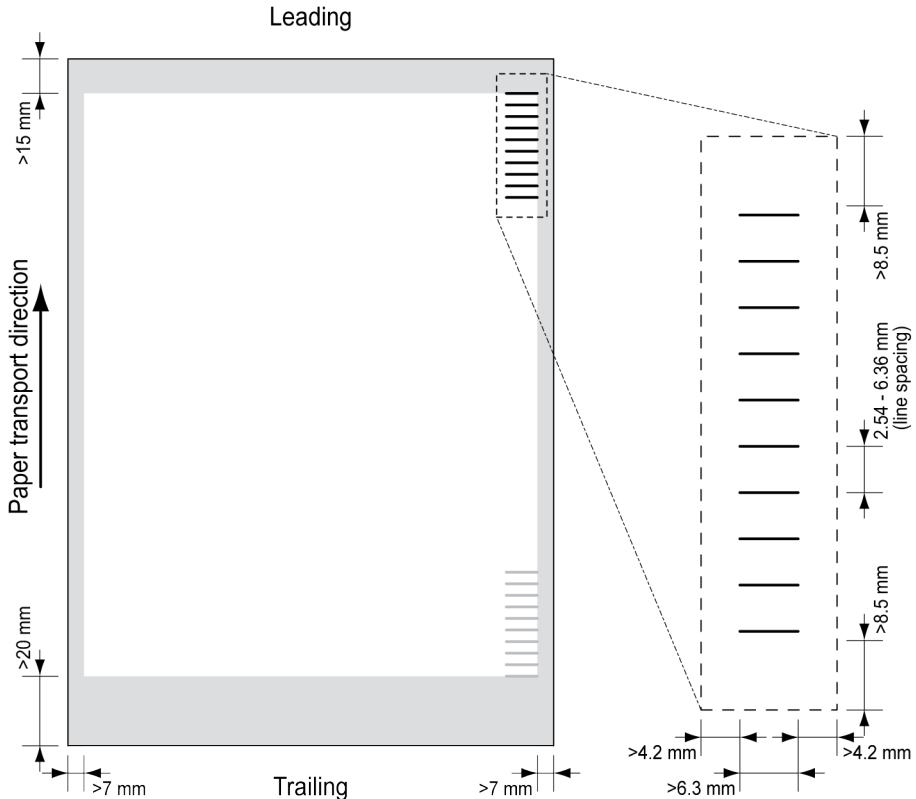
BCR advanced license

For the BCR advanced license the following functions are available:

- The basic functions (page N of M, insert/accumulate, Customer ID).
- Sheet sequence - Every sheet has a number, regardless of the document set it is part of. If a sheet is missing, an error is generated.
- Group sequence - Every document in a set has the same group number. If one document set is missing, an error is generated.
- Divert (Divert & Continue) - The set will be diverted and the system continues.
- Stop (Divert & Stop) - The set will be diverted and the system stops indicating error (FT1-RE1-000 Reading stop - Stop mark read).
- Selective feed - If the system reads the command, an enclosure from the enclosure feeder is added to the set. This function is printed on the last sheet of a set. It is also possible to add an enclosure from the versaFeeder.
- Sealing control - Determines if envelopes are sealed or not.
- Present on Deck & Continue - The set leaves the system from the upper unit. The system does not stop processing. The envelopes are not sealed.
- Present on Deck & Stop - The set leaves the system from the upper unit. The system stops. The envelopes are not sealed.
- Exit selection - Determines if the envelope is transported to stacker or to the side exit.

OMR Code Description

Position of the code on the document



88

English

Minimum line thickness of a mark: 0.2 mm (0.008 inch).

Default the first mark from the top is set to: 100 mm (3.9 inch). This parameter is set in the job settings.

The code must have a consistent number of marks on every page.

The white area in the picture shows the limits where the code can be printed.

OMR license types

There are two OMR license types:

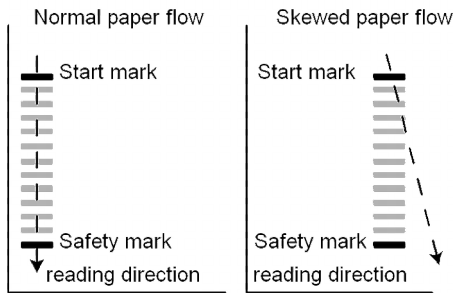
- Basic
- Advanced

Works Cited:

OMR basic license

For the OMR basic license the following functions are available:

- **Start mark:** indicates the start of the code.
- **Insert/Accumulate:** defines when a document set is complete and must be inserted into an envelope.
- **Parity check:** by adding a parity mark the reading code can be checked. The sum of the marks must be even.
- **Safety Mark:** is used as an extra security (only 1-track OMR). With skewed paper the reading head can miss part of the reading code. In these situations the safety mark is not read, and the system will give an error. The safety mark also indicates the end of the reading code. This mark must always be present on the document if it is part of the code definition.



The minimum code is one mark in one line (insert). However for reliability it is advised to use at least 2 marks. The first line is the start mark. A mark printed on the second line means insert. No mark on the second line means accumulate.

OMR advanced license

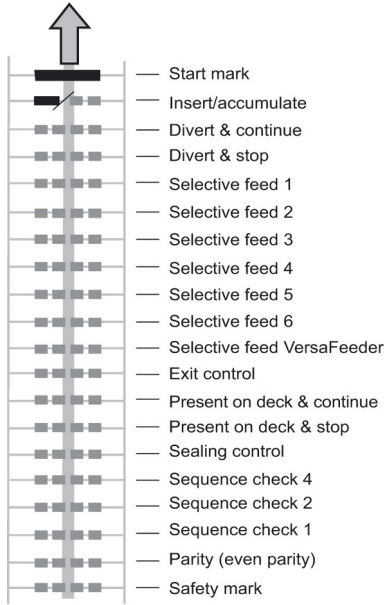
For the OMR advanced license the following functions are available:

- The basic functions (Start, Insert, Parity, Safety).
- Divert (Divert & Continue) - The set will be diverted and the system continues.
- Stop (Divert & Stop) - The set will be diverted and the system stops indicating error (FT1-RE1-000 Reading stop - Stop mark read).
- Selective Feed (feeder 1-6 and the versaFeeder) - If the system reads the command, an enclosure from the enclosure feeder is added to the set. This function is printed on the last sheet of a set.
- Exit control - Determines if the envelope is transported to stacker or to the side exit.
- Present on deck - The set leaves the system from the upper unit. The system does not stop processing. The envelope is not sealed.
- Present on deck and stop - The set leaves the system from the upper unit. The system stops. The envelope is not sealed.
- Sealing control - Determines if envelopes are sealed or not. If a mark is printed, the envelope is not sealed.
- Sequence Check - Sheets in a stack can accidentally get out of sequence or can be missing. This can be detected by the sequence check. Each sheet has a binary code that is a part of the reading code. Depending on the application one, two or three marks are used by sequence check.

OMR general remarks

General remarks:

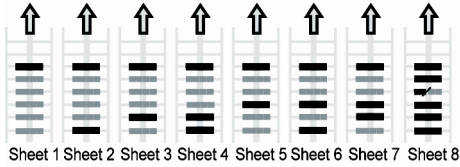
- In case of OMR the marks must always be used in the sequence as shown in the figure.



- If a function is suppressed the following function will move upwards one line.
- The mark definition is a service setting.

An Example of OMR Code

In the figure the legend for the following example is shown. In this example, a set of 8 sheets with one selective feed and three sequence check marks is shown.



- The first position is used for the start mark which must be printed on every sheet.
- The second mark position is used for the insert/accumulate command. A printed mark means insert, no mark means accumulate. Therefore the mark is printed on the last sheet of the set.
- Position 3 is reserved for selective feed from the enclosure feeder. Print a mark on position 3 when a selective feed from the enclosure feeder is required. The marks are printed on the last sheet of the set.
- Position 4, 5 and 6 are used for the sequence check marks. In this case a three mark sequence check is used.

Flex Reading Code Description

With "Flex reading" also non-standard codes and alternative document handling algorithms can be recognized. Flex reading can be activated by a system specific license code and by a customer specific setting that is saved in a physical dongle.

With Flex three types of reading can be supported:

- OMR
- BCR 1D
- BCR 2D

Depending on the license up to 9 Flex definitions can be used on the system. Creating a Flex job is similar like creating a OMR / BCR reading job.

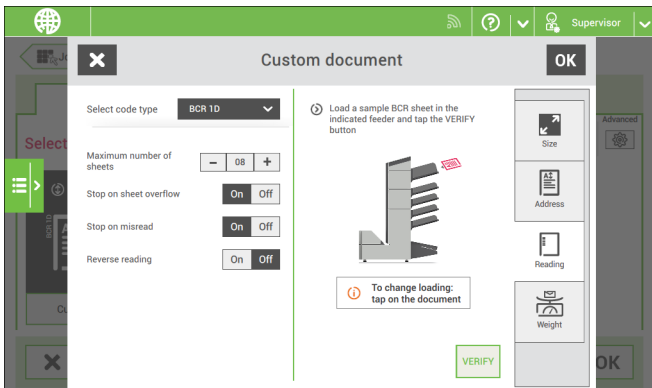
Create Jobs with Reading

Create a BCR Job

Create a BCR job

To create a job with BCR:

1. From the Job list menu, tap **[New job]**.
2. Choose **[Manual]** to define the job settings.
3. Select an envelope.
4. Tap **[Main document]**.
5. Tap **[Custom]**.
6. Enter the document size or select a standard type.
7. Tap the **[Reading]** tab.
8. Select the code type **[BCR 1D]** or **[BCR 2D]**.



9. Load a sample document in the feeder tray as indicated.
10. Tap **[Verify]** to find the barcode(s) on the sheet.
 - If multiple barcodes are found you can select the correct barcode from the list.
11. Tap **[OK]** and follow the remaining steps to complete the job.
12. When you completed the job creation, tap **[Save]** to save job.

If required the maximum number of sheets can be reconfigured. Refer to [Reading Settings](#) for more details on how to change these settings.

88

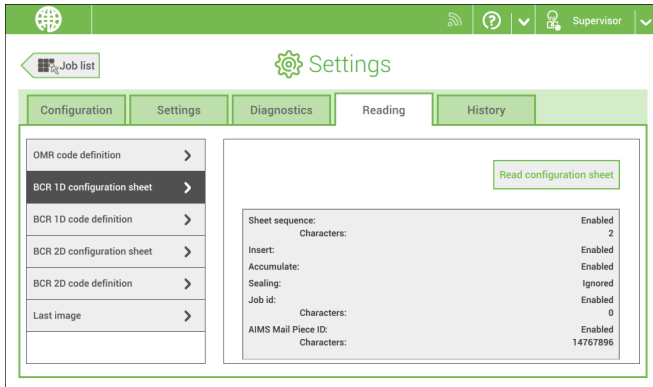
English

Read a Configuration Sheet

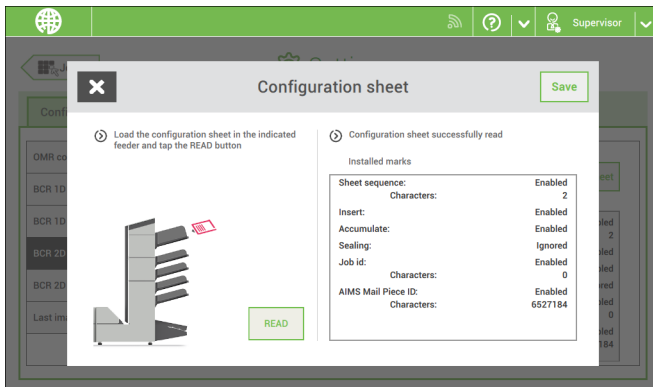
If you want to set the code definition for BCR, use a BCR configuration sheet. The configuration sheet function is available when you are logged on as a [supervisor](#) on page 6.

To read a configuration sheet:

1. Go to the settings menu for supervisor, see [Opening the settings menu \(supervisor\)](#).
2. In the settings menu, tap the **[Reading]** tab.



3. Tap **[BCR 1D configuration sheet]** or **[BCR 2D configuration sheet]**.
4. Tap **[Read configuration sheet]**.
5. Load the configuration sheet as indicated and tap **[READ]**.



6. Tap **[Save]** to save the new barcode definition.



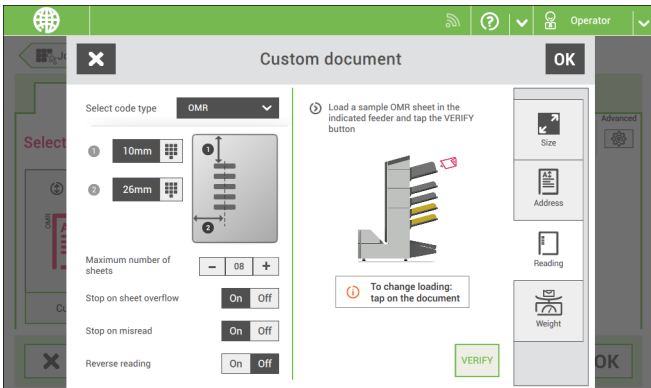
After reading a configuration sheet, jobs with BCR reading might have changed. These jobs are marked with an exclamation mark, verify the job settings before running the job.

You can also read a configuration sheet when you create or edit a BCR job. The function is available in the side menu.

Create an OMR Job

To create a job with OMR:

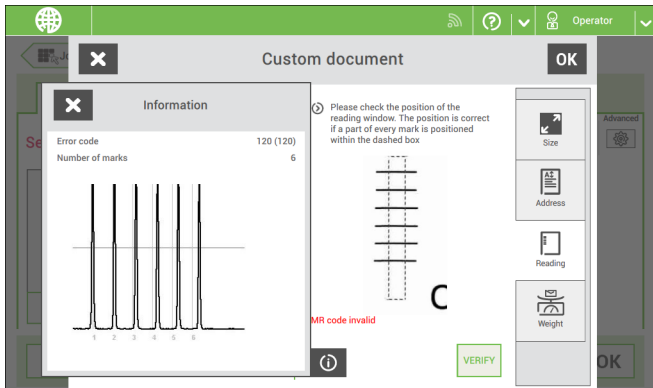
1. From the Job list menu, tap **[New job]**.
2. Choose **[Manual]** to define the job settings.
3. Select an envelope.
4. Tap **[Main document]**.
5. Tap **[Custom]**.
6. Enter the document size or select a standard type.
7. Tap the **[Reading]** tab.



8. Select the code type **[OMR]**.
9. Configure the location of the OMR marks by setting the offset of the top and left side of the sheet.
10. Load a sample document in the feeder tray as indicated.
11. Tap **[Verify]** to read an example sheet to check the correct reading of the OMR marks.
12. If necessary adjust the position from top and from left side. Verify again with a sample sheet.

Works Cited:

13. Tap the information button to verify the read OMR marks.



14. Tap **[OK]** and follow the remaining steps to complete the job.
15. When you completed the job creation, tap **[Save]** to save job.

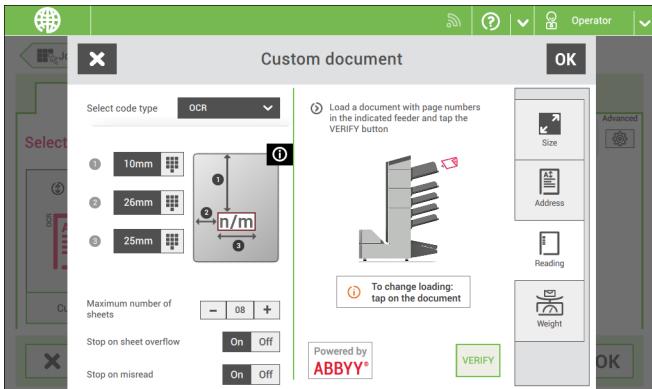
If required the maximum number of sheets can be reconfigured. Refer to [Reading Settings](#) for more details on how to change these settings.

Create an OCR Job

To create a job with OCR:

1. From the Job list menu, tap **[New job]**.
2. Choose **[Manual]** to define the job settings.
3. Select an envelope.
4. Tap **[Main document]**.
5. Tap **[Custom]**.
6. Enter the document size or select a standard type.

7. Tap the **[Reading]** tab.



8. Select the code type **[OCR]**.
9. Configure the location of the n / m characters by setting the offset of the top and left side of the sheet **[1]** and **[2]**.
10. Configure the width of the n / m characters **[3]**.
11. Load a sample document in the feeder tray as indicated.
12. Tap **[Verify]** to check if the page n / m characters are read successfully.
13. Tap **[OK]** and follow the remaining steps to complete the job.
14. When you completed the job creation, tap **[Save]** to save job.

If required the maximum number of sheets can be reconfigured. Refer to [Reading Settings](#) for more details on how to change these settings.

Create a Flex Reading Job

To create a job with Flex reading:

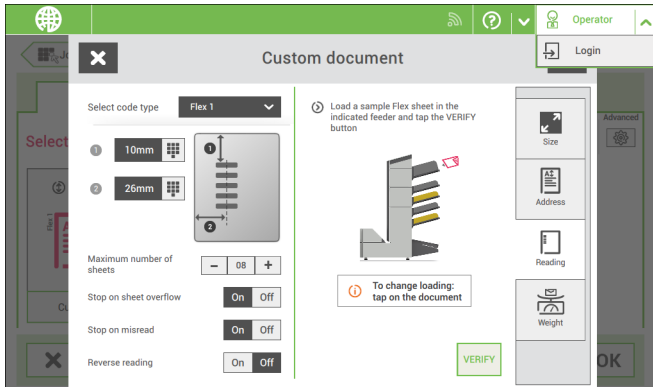
1. From the Job list menu, tap **[New job]**.
2. Choose **[Manual]** to define the job settings.
3. Select an envelope.
4. Tap **[Main document]**.
5. Tap **[Custom]**.
6. Enter the document size or select a standard type.
7. Tap the **[Reading]** tab.

Works Cited:

8. Select the code type [**Flex ..**].



Depending on the flex code type the OMR or BCR settings have to be configured.

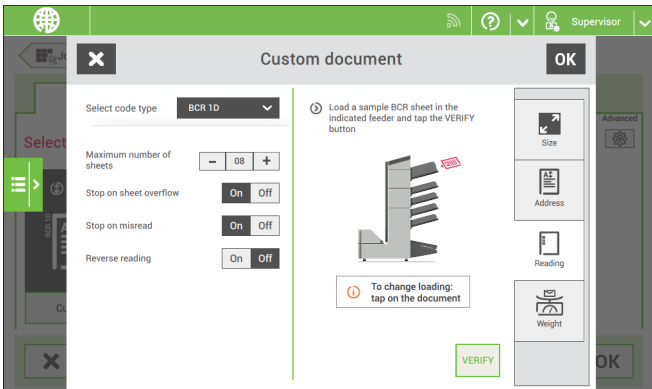


9. Follow the remaining steps to complete the job.

If required the maximum number of sheets can be reconfigured. Refer to [Reading Settings](#) for more details on how to change these settings.

Reading Settings

When you create a reading job for OCR, OMR, BCR 1D/2D or Flex reading, the following options can be set:



- **Maximum number of sheets:** use the [-] or [+] button to select the maximum amount of sheets in the set of documents.
- **Stop on sheet overflow:** defines if the system should stop or not when a set exceeds the maximum number of sheets, as defined at the "Maximum number of sheets setting".

In case of “on”, the system stops when the number is exceeded. The incorrect set is diverted. After resetting the system, the final part of the set is also diverted and the system starts processing again. The diverted set should be checked by the operator.

In case of “off”, the system does not stop when a set exceeds the maximum number of sheets. The incorrect set is diverted. The final part of the set is also diverted and then the system starts processing again.

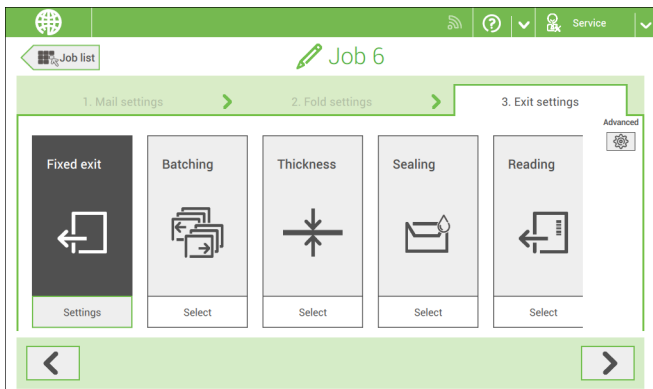
The maximum number of sheets in a set is 25. When the number of sheets exceeds 8 or 10, depending on the fold, the document can not be folded anymore. In this case, the maximum length of sheets is 148 mm for a C5/6 envelope. Also make sure that the fold is set to No fold. Ignoring this will certainly lead to stoppages.



When the maximum number of sheets exceeds the programmed maximum number of sheets in a set, the system stops and error FT1-RE1-312 will be displayed. After removing the set and tapping the [**Start**] button, the system starts and repeats the process until an insert or divert mark is encountered. Error FT1-RE1-003 (final set part) will be displayed.

- **Stop on misread:** defines if the system should stop or not when a code is misread. In case of “**on**”, the system stops after a misread. The incorrect set is diverted. After resetting the system, the final part of the set is also diverted and the system starts processing again. The diverted set should be checked by the operator. When “Stop on misread” is set to “**off**”, the system does not stop after a misread. The incorrect set is diverted. The final part of the set is also diverted and then the system starts processing again. After 5 misreads in a row, the system stops and an error code is generated.
- **Reverse reading:** (not applicable for OCR)
With Reverse reading the decision of inserting a mailset is marked on the next set. For example with OMR the insert mark is printed on the first page of the set. The system will detect the end of a set by detecting the first page of the next set. For example in case of BCR using the Customer ID to complete a set. If the ID changes, the set is inserted.
In case the feeder runs empty, the last set is still on the collator because the beginning of the next set could not be detected. In this case the feeder empty message contains an **[Ignore]** function. Tap **[Ignore]** and the set on the collator will be inserted. Because of the feeding and collating principle reverse reading has the following limitations:
 - The last mark of the code should be printed maximally 85 mm (3.3 inch) from the top.
 - Enclosures and selective enclosures cannot be handled. When a versaFeeder module is added to the system configuration, enclosures and selective enclosures can be handled with reverse reading.

Exit Selection with Reading



When you have a job with reading, more exit selection options are available:

- **Fixed Exit:** tap **[Settings]** to select which exit must be used for this job. If you select stacker, you can choose to let the system continue on the side exit if the stacker is full.
- **Batching:** tap **[Settings]** to define after what number of mail sets, the system must switch to the other exit. In case of a reading job, you can switch off that the system changes the exit on a reading mark.
- **Thickness:** depending on the thickness of the document set, the envelop exits to the stacker or the side exit. Tap **[Settings]** to define the exit when the mail set is thicker or thinner than the reference. The reference is the first document set.
- **Sealing:** depending on if the envelopes are closed (sealed) or open (not sealed), the envelope exits to the stacker or the side exit. This selection is only possible with reading: no mark (space) means sealed, a mark means not sealed.
- **Reading:** reading has two options: switch exit on mark and let the code define which exit is used. Switch exit on mark means that at every exit code the system changes the exit. If the code defines the exit, you define what happens if the exit code is read: exit code means stacker or exit code means side-exit.
- **Weight:** When using reading the size and weight of the mail set can be different per insert. In order to sort the filled envelopes based on weight, e.g. to stay within a certain postal tariff, the machine can sort the filled envelopes on weight and send them either to the side exit or the stacker.

To enable weight sorting each item in the mail set needs to have a weight configured; the weight of the envelope, main document and possible enclosures have to be set. The machine sums up the total weight of used envelope and documents and compares it with a reference to determine to send the filled envelope to the side exit or the stacker.