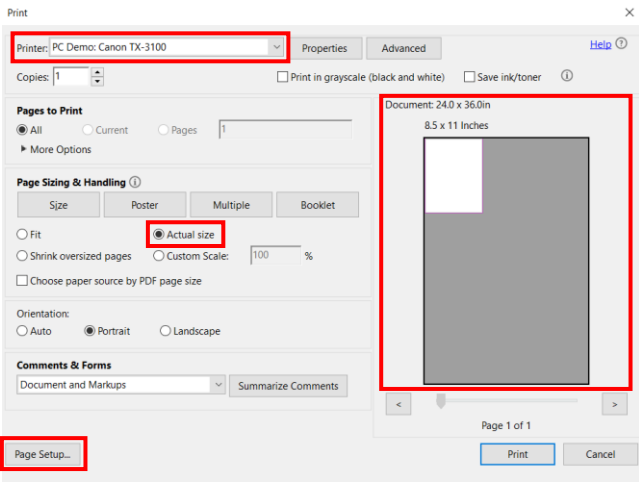
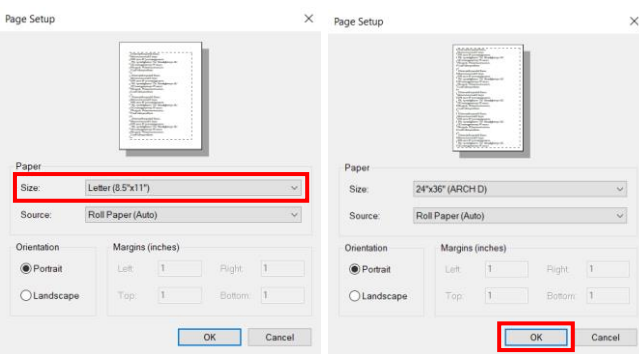
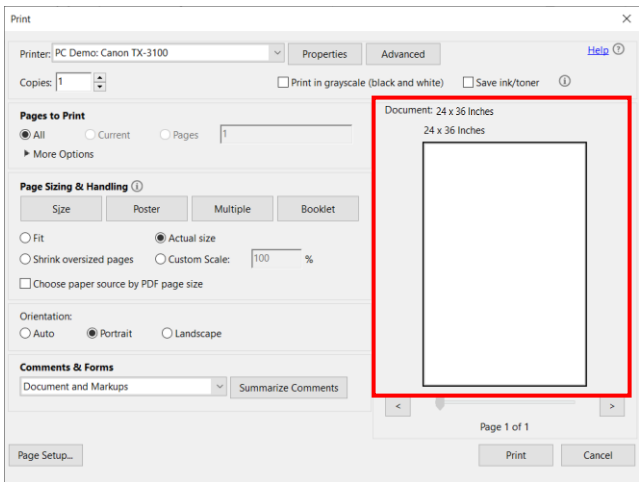


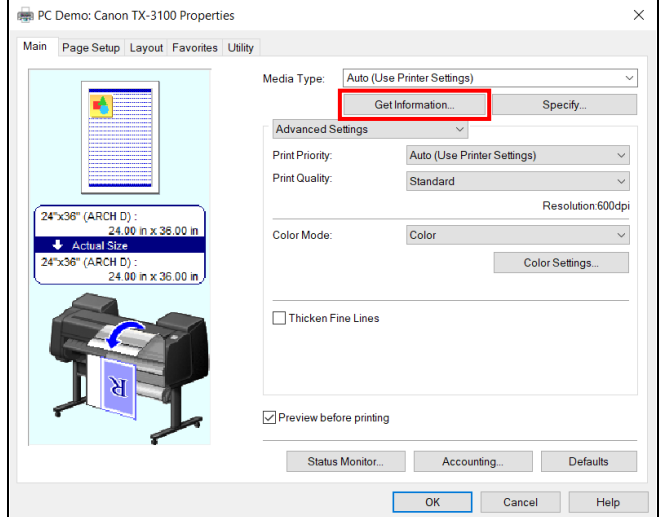
Canon imagePROGRAF: Print Driver Settings from a PC

Using the Wide Format Print Driver to print from a PC.

<ol style="list-style-type: none"> 1. File → Print 2. Select desired printer 3. In the Adobe Reader screen, select Actual Size under Page Size Handling 4. Make sure the document sizes are correct <ul style="list-style-type: none"> • If they are not: Select Page Setup 	
<ol style="list-style-type: none"> 5. Change Size to document size via dropdown 6. Select OK 	
<ol style="list-style-type: none"> 7. The Document Size will now be correct 8. Click Properties next to the Printer name 	

9. Click Get Information...

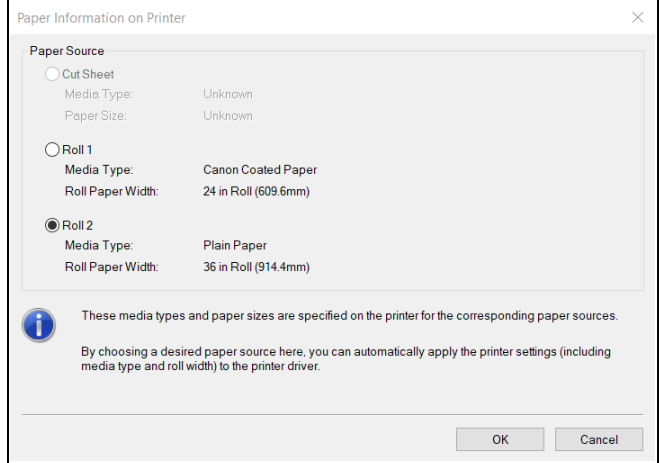
- The print driver reaches out to the device and collects the following data:
 - How many rolls of paper
 - If a cutsheet is loaded
 - Type of paper
 - How much paper



10. Select which roll is going to be used for the print

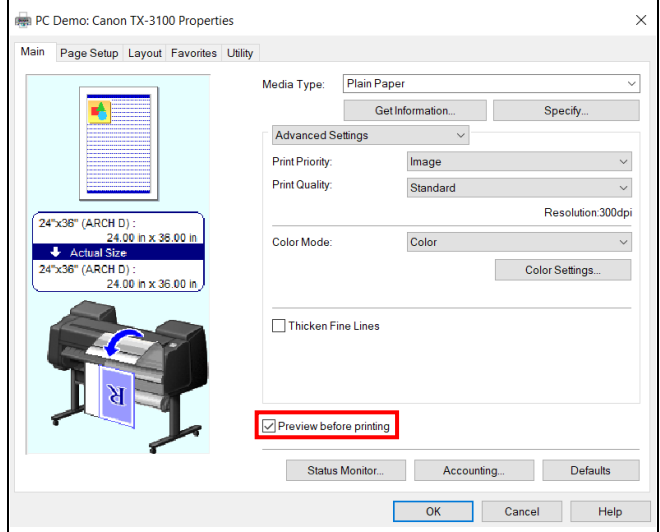
- Or Cut sheet – cut sheets need to be loaded beforehand

11. Click OK



12. Preview before printing: the document will be shown in a popup window to view before printing

- if correct press **File → Print**
- if incorrect press **File → Cancel**

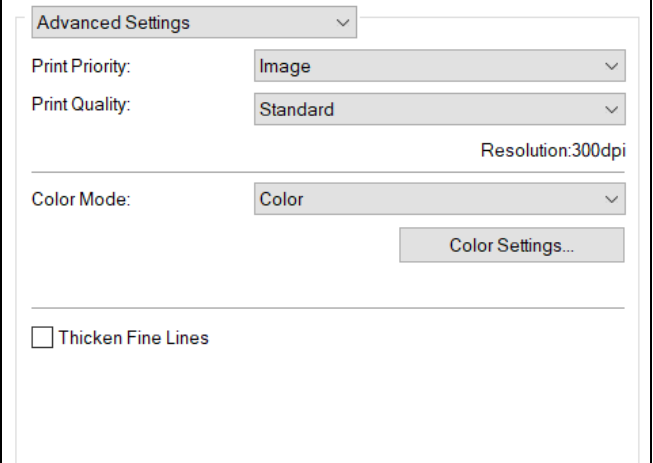


13. Main:

Advanced Settings:

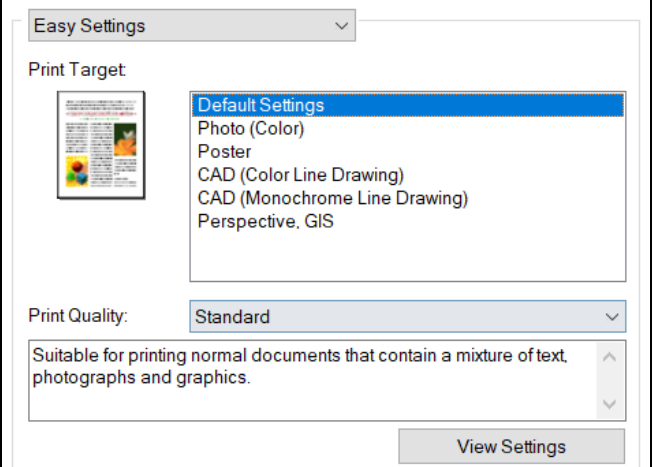
- **Print Priority:** can define if it is an *image* or *line drawing/text*
- **Print Quality:** high, standard, fast, custom
- **Color Mode:** color, monochrome
- **Color Settings:** more detailed color adjustments
- **Thicken Fine Lines:** make fine line appear thicker

OR...



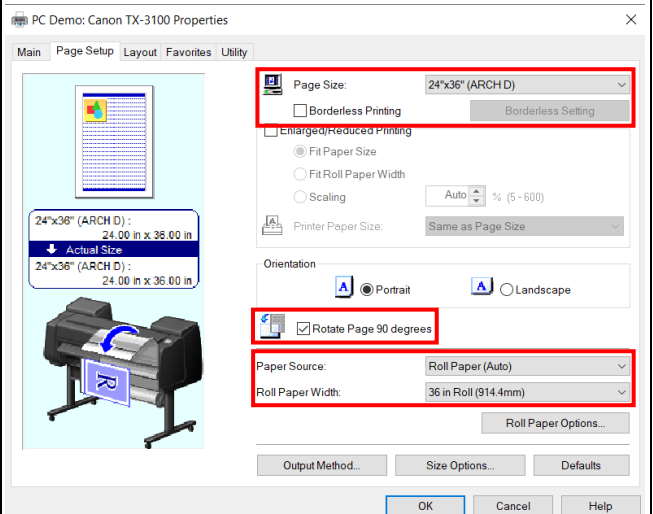
Easy Settings:

- **Default Settings:** normal documents that contain a mixture of text, photographs and graphics
- **Photo (color):** photographic images captured with a digital camera
- **Poster:** best setting for posters; vivid and high impact colors
- **CAD (color line drawing):** fine lines such as drawings
- **CAD (monochrome line drawing):** CAD drawings with sharp, dark lines
- **Perspective, GIS:** attractive printing of 3D-CAD drawings, perspective drawings, and GIS drawings including maps

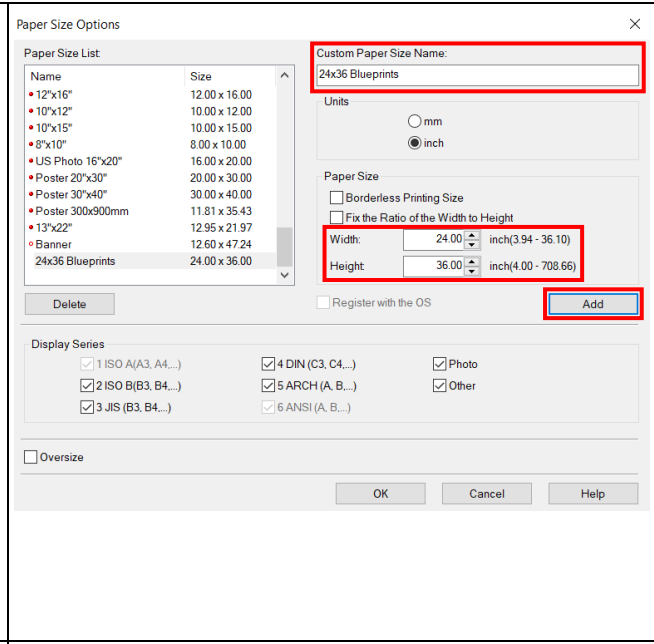


14. Page Setup:

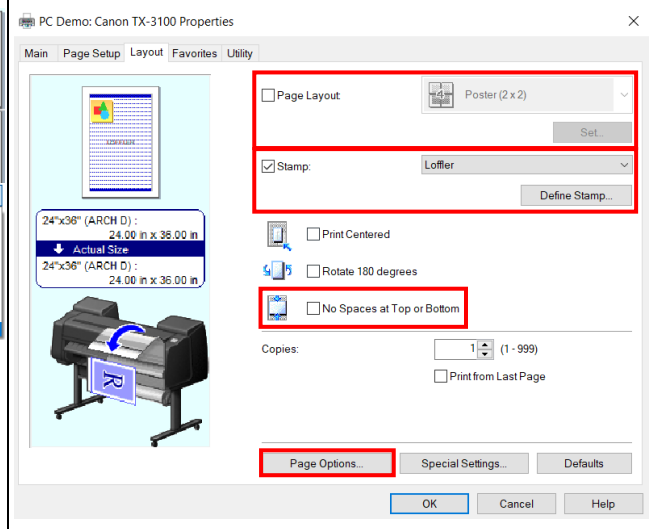
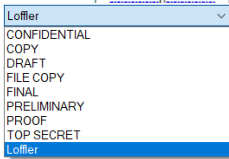
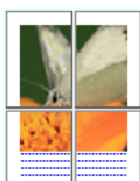
- **Page Size:** this pulls from the document
- **Borderless Printing:** can do edge to edge printing so the document will be borderless; note this does stretch the document slightly to the edges
- **Enlarged/Reduced Printing:** can shrink or enlarge from the original document size
 - **Fit Paper Size:** select the Printer Paper Size desired
 - **Fit Roll Paper Width:** Select the correct Roll Paper Width from below
 - **Scaling:** can select a percent to enlarge



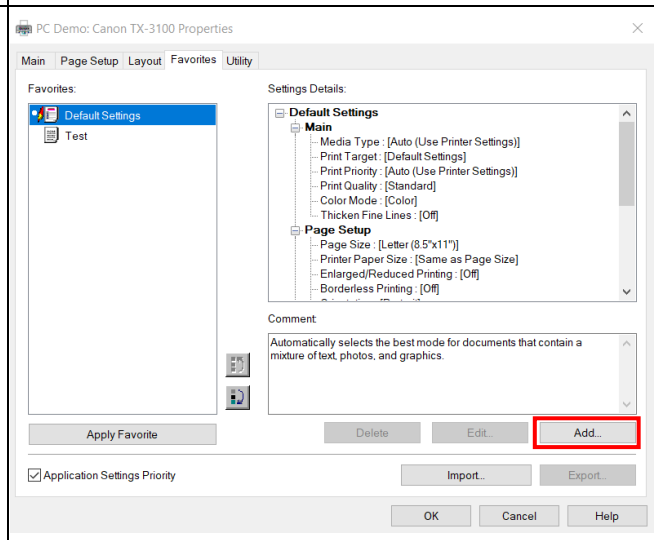
- **Rotate Page 90 degrees:** will rotate the page 90 degrees *if it can*, if it won't fit, it does not rotate
- **Paper Source:** Auto, roll 1, roll 2, cut sheet (*chosen when get information is clicked*)
- **Roll Paper Width:** width of paper (*chosen when get information is clicked*)
- **Output method:** can **Save in Job Box** at device or set PIN to release at printer
- **Size Options:** can create custom paper sizes
 - Name, enter size, **Add, OK**
 - it will now be available under **Page Size → Custom**
 - Once added, the custom sizes will be available in **Page Setup**



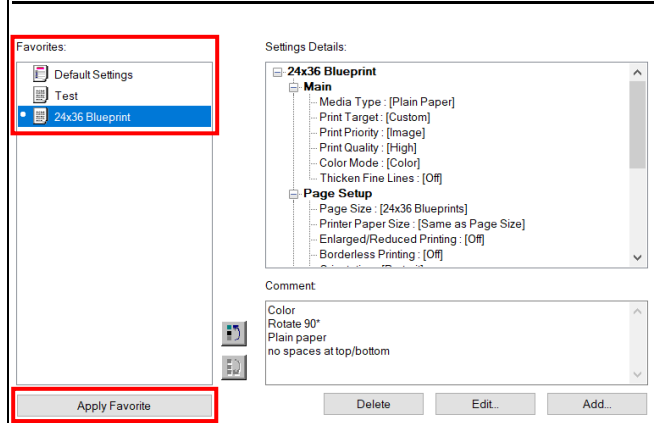
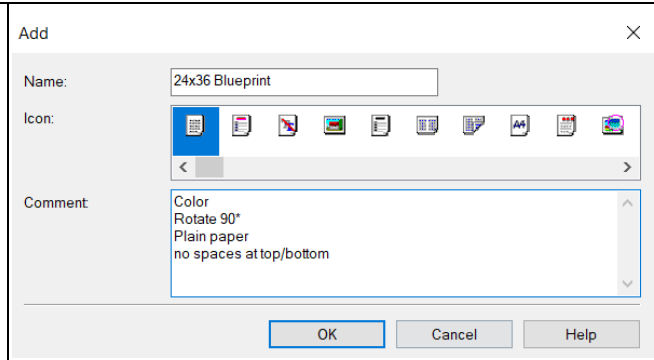
- 15. Layout:**
- **Page Layout:** breaks a print into a grid, printing each piece at the original size
 - **Stamp:** custom and premade watermarks; click **Define Stamp** to create a custom watermark
 - **No Spaces at Top or Bottom:** cuts the document at the edge of the print area, leaving no white at the top or bottom
 - **Page Options:** print date & print username



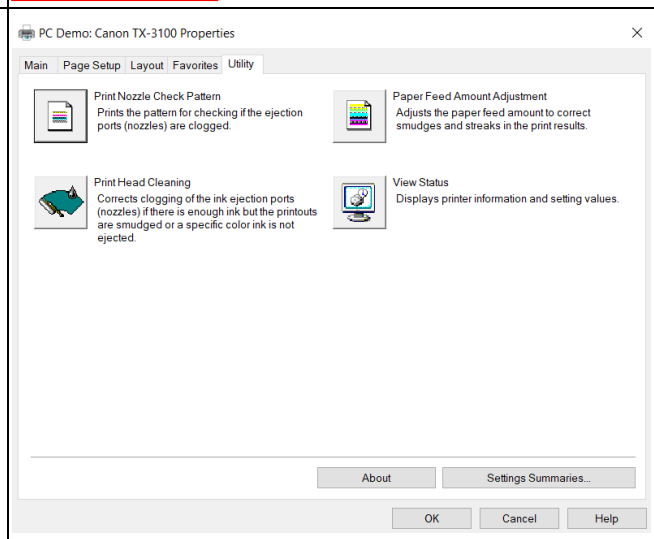
- 16. Favorites:** Add, edit, delete, export and import presets from here
- Favorites can be exported and shared with others
 - Make sure all selections are made before creating the preset
 - Click **Add**



- Name preset & add any notes
 - Click **OK**
-
- Preset is now in **Favorites** list
 - To use one, select desired preset → click **Apply Favorite**



- 17. Utility:** Some cleaning and adjustments can be made from the print driver
- **Print Nozzle Check Pattern:** prints the pattern for checking if the ejection ports (nozzles) are clogged
 - **Paper Feed Amount Adjustment:** adjusts the paper feed amount to correct smudges and streaks in the print results
 - **Print Head Cleaning:** corrects clogging of the ink ejection ports (nozzles) if there is enough ink but the printouts are smudged or a specific color ink is not ejected
 - **View Status:** displays printer information and setting values



Once all selections have been made, select **OK** → **Print**