

[Tri-Fold Position Adjustment]

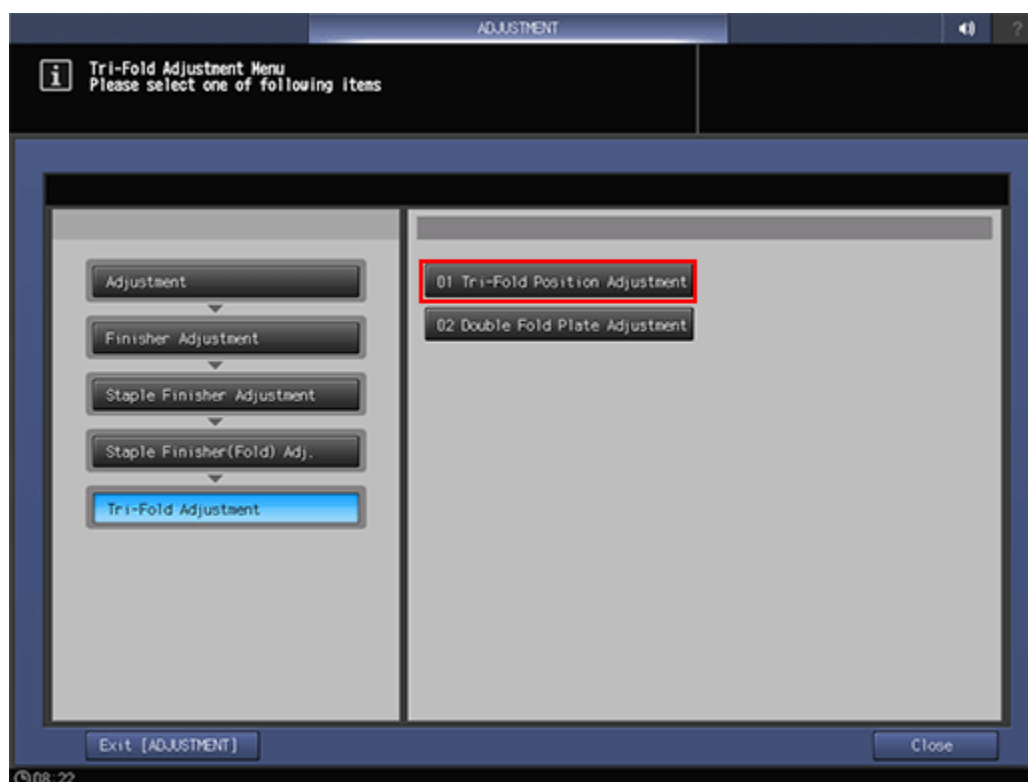
Adjust the positions of [Fold 1] and [Fold 2] for Tri-Fold in **Saddle Stitcher SD-510** mounted in **Finisher FS-532**. Make this adjustment if the [Multi Half-Fold] position is not within the allowance range.

Objects of Adjustment: [8.5 × 11 w], [A4 , [16K 

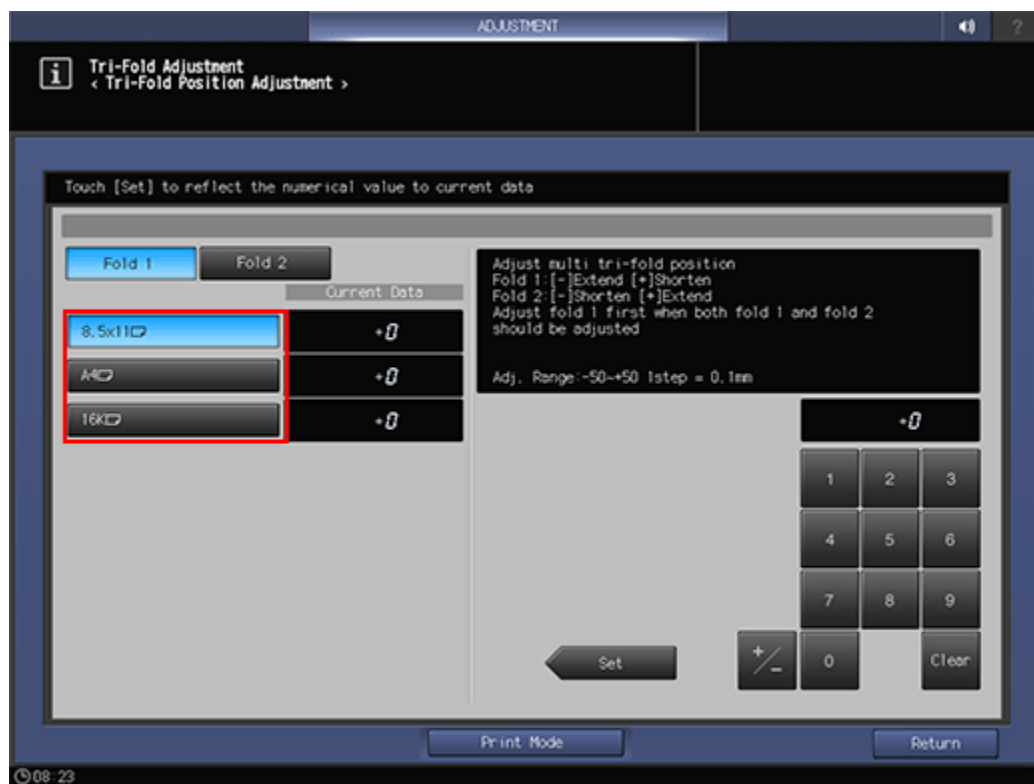
★ NOTICE

- When adjusting both [Fold 1] and [Fold 2], be sure to start with the [Fold 1] adjustment. The position of [Fold 1] is calculated from the edge of the paper, while that of [Fold 2] is calculated from the position of [Fold 1]. Consequently, the measurement (b) in step 7 is subject to the change in either position of [Fold 1] and [Fold 2].

- 1 Press [Adjustment] on the [MACHINE] screen to display the [Adjustment Menu] screen.
- 2 Press [Finisher Adjustment], [Staple Finisher Adjustment], [Staple Finisher(Fold) Adj.], [Tri-Fold Adjustment], and [Tri-Fold Position Adjustment] in sequence.



- 3 Select the size to be adjusted.



4 Press [Print Mode].




5 Load the paper size selected in step 3, then select that tray key.

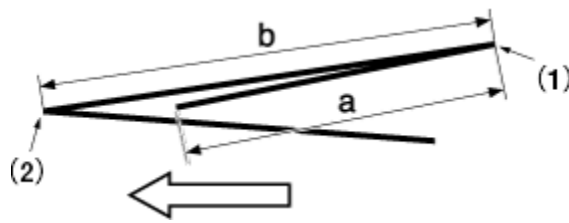
✓ For [Output Setting], [Multi Tri-Fold] is automatically selected.

6 Press **Start** on the control panel.

A sample pattern will be output.

7 Measure the lengths (a) and (b) of the printed paper.

Paper Size	Allowance	
	a	b
A4 	95.0 mm ± 2.0 mm	101.0 mm ± 2.0 mm
8.5 × 11 	89.4 mm ± 2.0 mm	95.0 mm ± 2.0 mm
16K 	88.0 mm ± 2.0 mm	91.0 mm ± 2.0 mm



8 Press [Exit PrintMode] to return to the [Tri-Fold Position Adjustment] screen.

9 Select [Fold 1].

10 Use the touch panel keypad to enter the set value.

[Adj. Range: -50~+50 1 step = 0.1 mm]

Fold 1: [-] Extend [+] Shorten

✓ Use [+/-] to specify the value to be positive or negative.

✓ The measurement (a) in step 7 increases with positive value entered, and decreases with negative value entered.

11 Press [Set] to enter the Current Data as the setting value.

12 Select [Fold 2].

13 Use the touch panel [keypad] to enter the set value.

[Adj. Range: -50~+50 1 step = 0.1 mm]

Fold 2: [-] Shorten [+] Extend

✓ Use [+/-] to specify the value to be positive or negative.

✓ The measurement (b) in step 7 increases with positive value entered, and decreases with negative value entered.

14 Press [Set] to enter the Current Data as the setting value.

15 Repeat steps 4 to 14 until the desired result is obtained.

16 Press [Return].

The screen returns to the [Tri-Fold Adjustment Menu] screen.

Press [Close].

17 The screen returns to the [Staple Finisher(Fold) Adjustment Menu]screen.