

Xerox® Versant® 180 Press

Quick Reference for SIQA Image Transfer

The purpose of this adjustment is to correct for mottle (uneven toner coverage) and color shift (inconsistent color). These IQ issues may occur on heavy-weight stocks. This procedure creates and saves an Image Transfer Adjustment to the Bias Transfer Roll in the press. The Bias Transfer Roll is where the image is transferred from the belt to the paper. Once created for a stock, the adjustment is saved and can be selected for that stock for any tray. SIQA automates the creation of the adjustment and eliminates the need for you to interpret printed targets and manually enter adjustment values. This saves time and avoids errors.

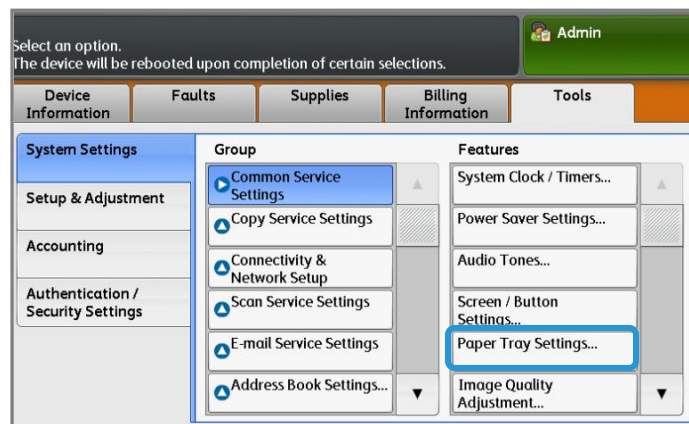
Performing SIQA Image transfer

Follow these steps to perform a Simple Image Quality Adjustment (SIQA) for image transfer:

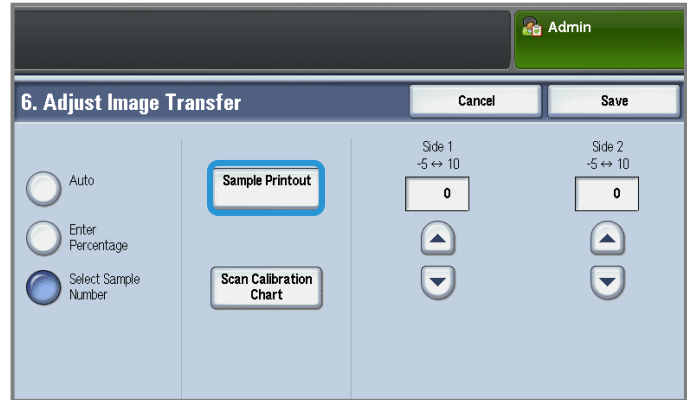
1. At the Press UI, select the **Login/Logout** button.
2. Log-in as a System Administrator.
3. Select the **Machine Status** button on the UI control panel:



4. Touch the **Tools** tab.
5. On the Features column, touch **Paper Tray Settings**.
6. Select **Custom Paper Settings**.
7. Select the first line with **<Available>** under Current Settings.
8. Touch **Change Settings**.
9. Touch the **Name** line.
10. Touch **Change Settings**.
11. Enter a name for this adjustment. For applying the adjustment later when printing, it is useful to name the adjustment with the paper size and weight. For example, **11x17_220**
12. Touch **Save**.
13. Touch **Adjust Image Transfer**.
14. Touch **Change Settings**.
15. Touch **Select Sample Number**.
16. Touch **Sample Printout**.



17. Touch **Paper Supply** and select the Paper Supply tray and paper for this procedure. Select the type of stock on which you are seeing uneven color. If you are seeing the problem on an 8.5x11" (A4) paper with a weight of 220 gsm, then if possible use an 11x17" (A3) size with the same weight – 220 gsm. You need to match the weight, and it is best to use a large size paper so that more target patches will be printed and scanned.



18. Touch **Save**.

19. Under 2 Sided select either **1 Sided** or **2 Sided**. Select 1 Sided if you are printing Simplex pages, and 2 Sided if you are printing Duplex pages.

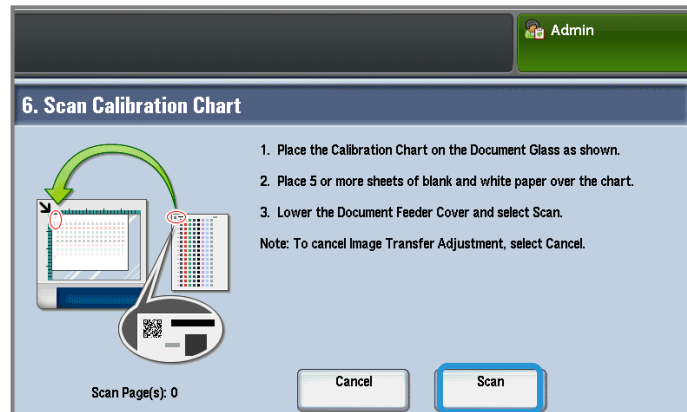
20. Press the green **Start** button on the Control Panel. A target print is made by the press.

21. Press **Confirm** when the printing is complete and you see the message “Diagnostic routine completed successfully.”

22. Touch **Close**.

23. Touch **Scan Calibration Chart**.

24. Follow the on-screen directions to position the target on the document glass with the code in the top left corner of the glass, and with Side 1 facing down. of the glass. The code is a square with a black bar beside it – on the top left of the page.



25. Place 5 sheets of blank white paper on top of the target.

26. Lower the Document Feeder Cover.

27. Touch **Scan** on the Control Panel.

28. When the scanning is complete, **Scan Page(s) 1** appears on the lower left of the screen.

29. If you selected 2 Sided in Step 16, open the Document Feeder Cover and turn the target over so that **Page 2 is now facing down**. As you did for the first scan, position the target on the document glass with the code in the top left corner of the glass. If you are performing the procedure for 1 Sided printing only, skip to Step 34.

30. Place 5 sheets of blank white paper on top of the target.

31. Lower the Document Feeder Cover.

32. Touch **Scan** on the Control Panel.

33. When the scanning is complete, **Scan Page(s) 2** appears on the lower left of the screen.

34. Touch **Start** on the Touch Screen.

35. When adjustments are complete, touch **Confirm**.

36. Notice the adjustments that have been made for Side 1 and Side 2. They may range from -5 to +10.

37. You can now print a sample to see the results of the adjustment, or immediately save the results.

To print a sample, touch **Sample Printout**, and press the green **Start** button on the Control Panel. Touch **Confirm** after the sample prints, and then **Close**. To evaluate the sample, check the color patches for the row marked 0.

To save the results without checking, touch **Save**.



38. Select **Save**.

39. Touch **Close**

40. Touch **Close**.

41. Log out of Admin mode by selecting the Admin icon on the top right of the screen, and touching **Logout**.

Assigning the Image Transfer to Media

Once an Image Transfer is created and saved, you can assign it to any tray that is feeding the stock for which you created the adjustment. Follow these steps to assign the adjustment:

1. Open and close the paper tray with the media requiring the Image Transfer settings. The Tray Properties window opens on the Touch Screen.

2. Touch **Change Settings**.

3. Select **Paper Type & Paper Weight**.

4. Scroll down until you see the **name** of the Image Transfer Adjustment that you created and want to apply. Select this name.

5. Touch **Save**.

6. Touch **Save** two more times to save the assignment and exit the screens.

The selected Image Transfer Adjustment will now appear on the Control Panel display for the Paper Tray that you assigned.

