

Canon ImageRUNNER Advance: Remote Operation Software

How to download and open the Remote Operation Software:

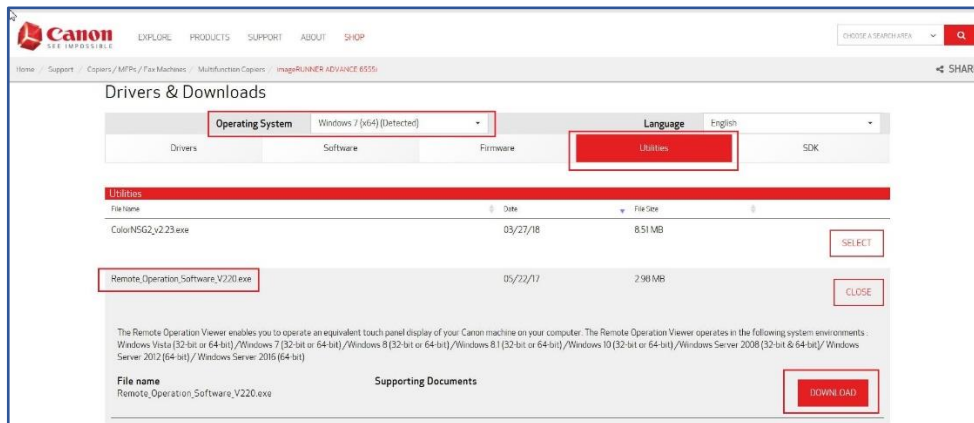
1. Open a web browser and copy and paste the following link in the address bar.



<https://www.usa.canon.com/internet/portal/us/home/support/details/copiers-mfps-fax-machines/multifunction-copiers/imagerunner-advance-6555i?subtab=downloads-utilities>

This link will take you to the Canon Website where you can download the Remote Operation Software.

2. Notice the Canon website captures your Operating System.
3. Confirm Utilities is selected.
4. Scroll down and select Remote_Operation_Software V220.exe. (May show other version depending on model)
5. Select Download to download the zipped file to your computer.



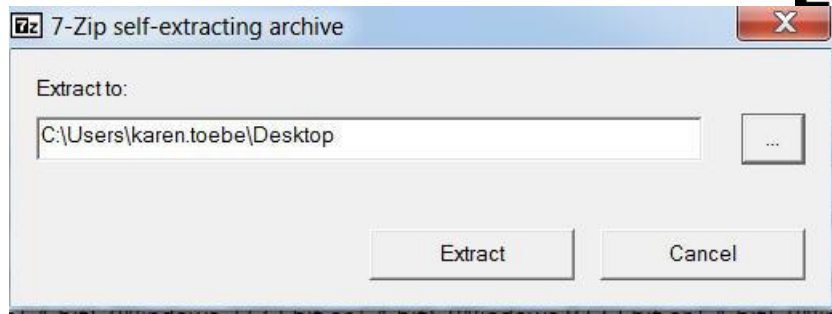
6. Select Run or Save to download the file to your computer.



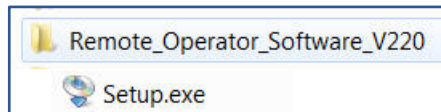
7. Extract the zipped file.

Note: If necessary, you may use the ellipse (...) to designate where you want to save the file.



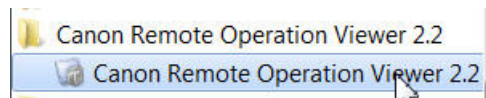


8. Locate the folder where the download was extracted and double click the Setup.exe



9. Follow the instructions in the wizard to install the software.

10. To open the remote Operator Software, click on the Canon Remote Operation View 2.2 folder, then select the Canon Remote Operation Viewer 2.2 program.



11. Enter the IP address or domain name of the device to operate.

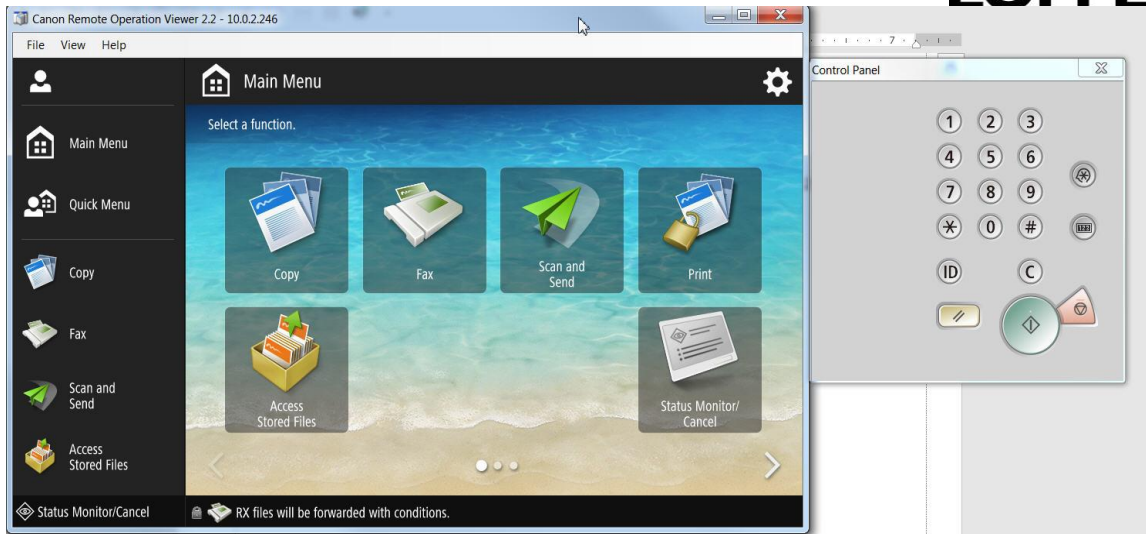


12. The remote software displays the copier's front panel on the screen.



QUICK GUIDE

LOFFLER



Troubleshooting

If you cannot connect to the copier, make sure the Remote Operation Setting is set to ON in Settings and Registration window.

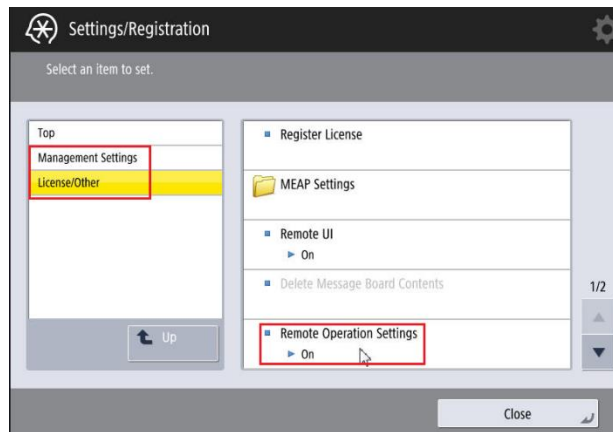
1. Open the Settings and Registration on the copier.



2. Log in if necessary

3. Navigate to the Remote Operator option.

- a. Management Settings
 - i. License/Other
 - ii. Remote Operation Settings



4. Select **ON** and then **OK** to close the window.

