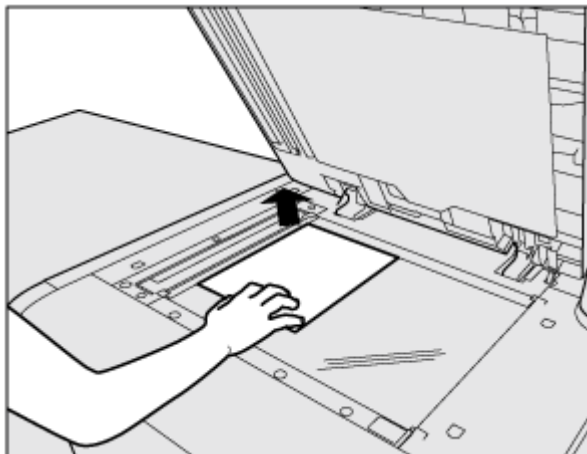
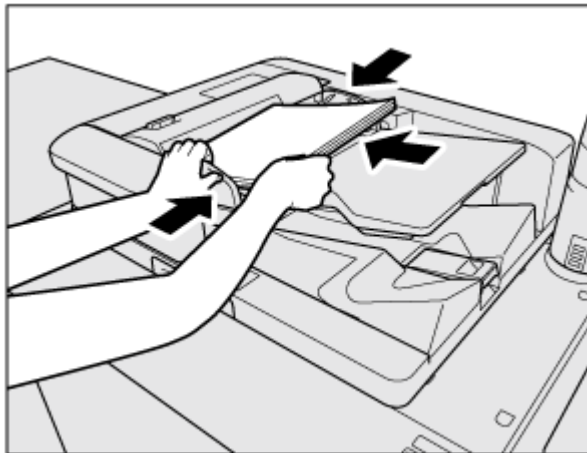


Basic Copy Procedure

Follow the procedure below to make a basic copy.

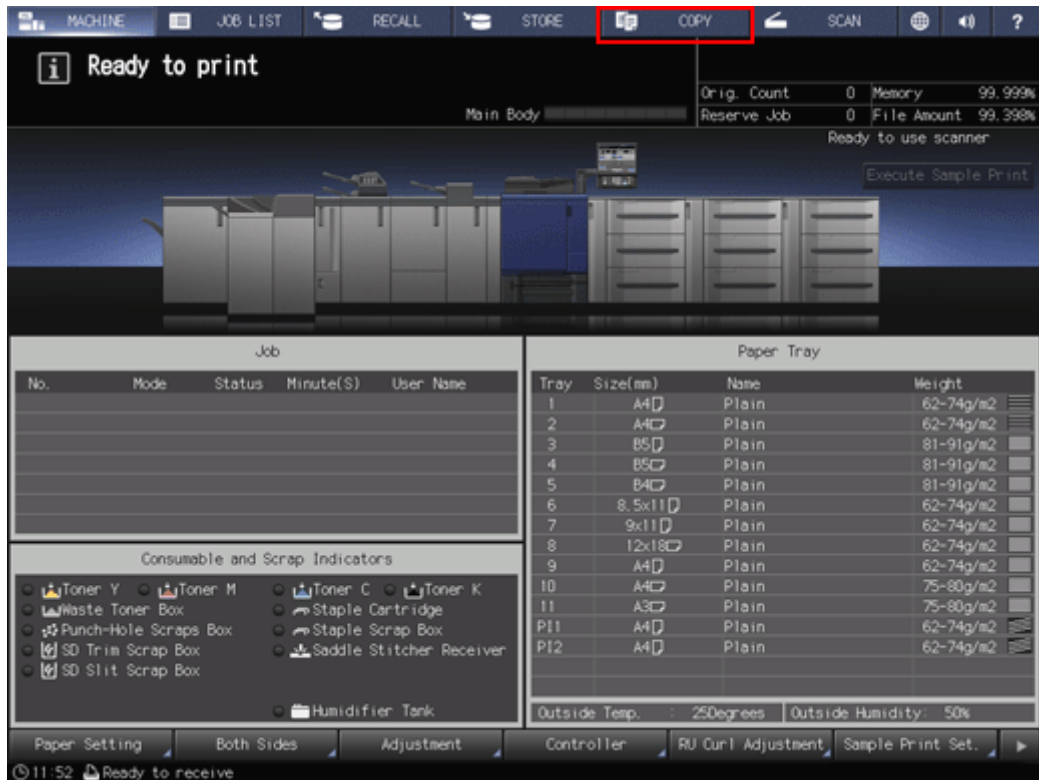
- The following describes the basic procedure. It is not always applicable to the operations of set copy conditions. When using a specific function, be sure to follow the procedure described in each section.

1 Position the original.



2 Press the [COPY]tab to display the [COPY]screen.

The [MACHINE]screen shows up first at the default setting. To display the [COPY]screen, press the [COPY]tab on the [MACHINE]screen.



- ✓ [Default Screen Setting] can be set to the [Hold Job] screen of the [JOB LIST] screen or the [Reserved Job] screen of the [JOB LIST] screen. To display the [COPY] screen, press the [COPY] tab in both cases.
- ✓ For [Default Screen Setting], refer to [Default Screen Setting](#).

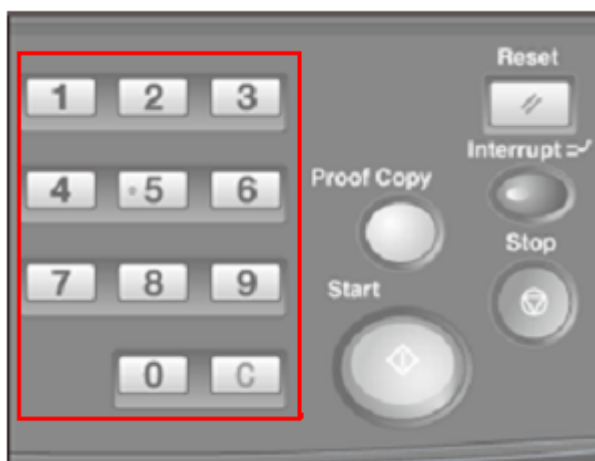
3 Set copy conditions as desired.

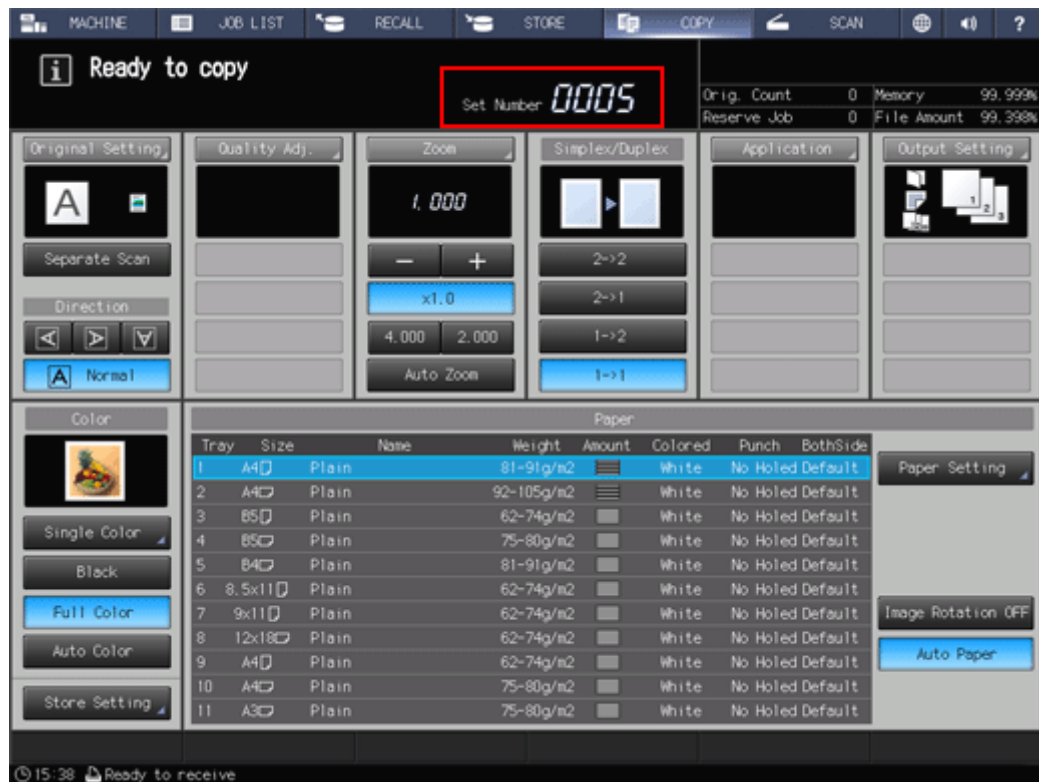


The following settings are available from the [COPY]screen.

- ✓ [Original Setting]: Refer to [Original Setting: Setting the Original](#).
- ✓ [Separate Scan]: Refer to [Separate Scan: Handling Scanned Original as Single Job](#).
- ✓ [Quality Adj.]: Refer to [Overview of Quality Adjustment](#).
- ✓ [Zoom]: Refer to [Zoom : Setting Copy Zoom](#).
- ✓ [Simplex/Duplex]: Refer to [Simplex/Duplex: 1-Sided Copy and 2-Sided Copy Settings](#).
- ✓ [Application]: Refer to [Overview of Application](#).
- ✓ [Output Setting]: Refer to [To Display the Output Setting Screen](#).
- ✓ [Color]: Refer to [Color: Selecting Color Mode](#).
- ✓ [Store Setting]: Refer to [Store Setting: Holding the Scanned Copy Job on this Machine or Saving it on the HDD](#).
- ✓ [Paper Setting]: Refer to [Paper Information](#).
- ✓ [Image Rotation OFF]: Refer to [Image Rotation OFF: Prohibits image rotation to suit the orientation](#).
- ✓ [Auto Paper]: Refer to [Auto Paper: Selecting Paper Size Automatically](#).

4 Enter the desired print quantity from the keypad on the control panel.





Entered quantity is displayed.

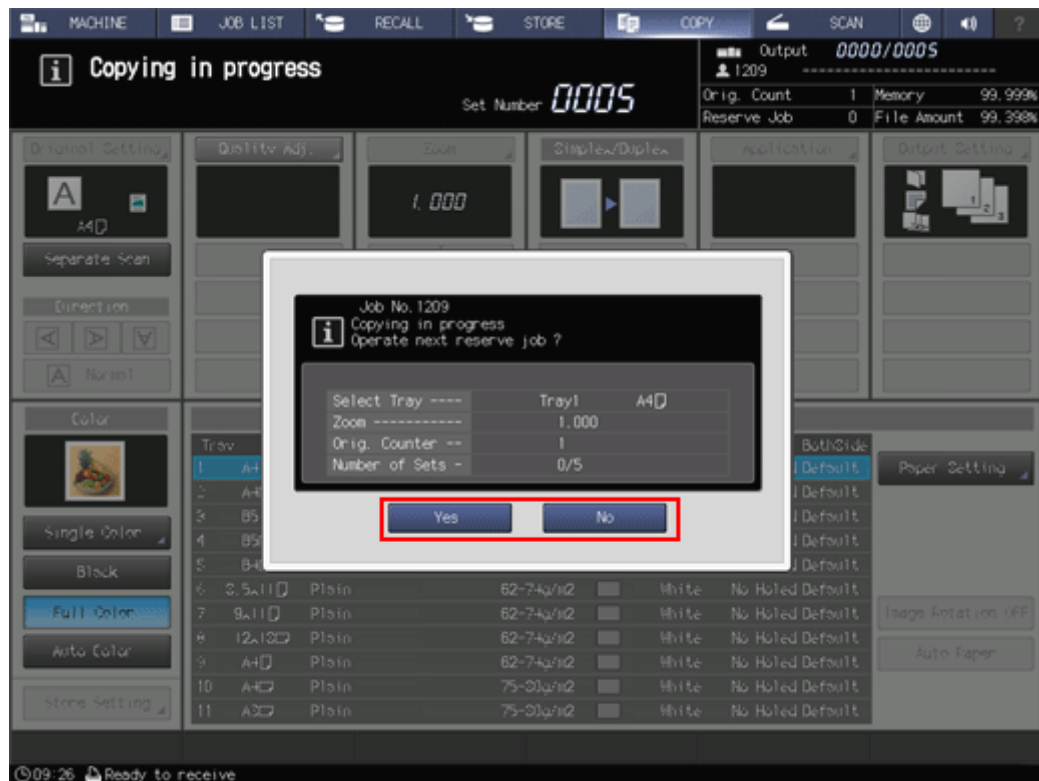
- ✓ For details about how to enter the number of copies, refer to [Setting Print Quantity](#).

5 Press **Start** on the control panel.



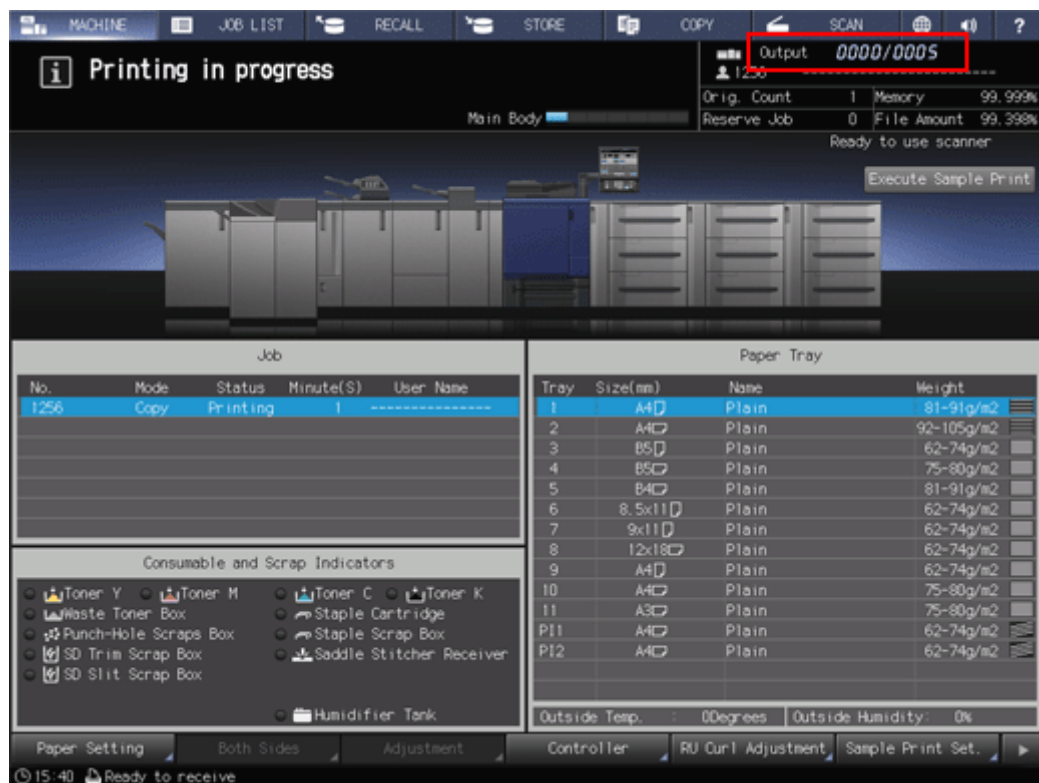
- ✓ In order to start copying, make sure to display the [COPY]screen. If you press **Start** with any other screen displayed, you cannot start copy operations.
- ✓ If you print from the [Hold Job]screen or the [RECALL]screen, the [COPY]screen does not have to be returned.
- ✓ When scanning the original for the job is started, a dialog is displayed on the [COPY]screen.

6 Press either [Yes] or [No] on the dialog.

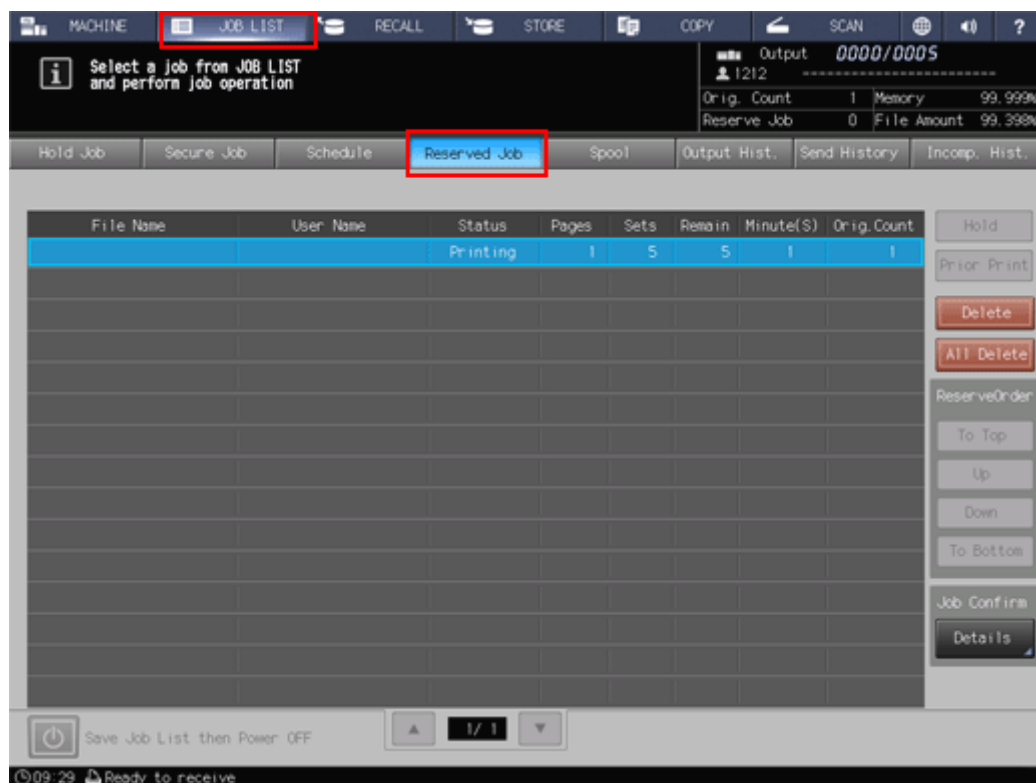


- ✓ To return to the [COPY] screen, press [Yes].
- ✓ You are now ready to set reserve job.
- ✓ To return to the screen set in [Default Screen Setting], press [No].

The count and set quantities are displayed at the upper right corner of both screens.



The current job is displayed in the job list in the [Reserved Job]screen of the [JOB LIST]screen.



→ Reference

- For details about how to select the default screen which is displayed when turning on the power, refer to [Default Screen Setting](#).
- You can change the operation order of reserved jobs or cancel reserved jobs in the [JOB LIST]screen. For details, refer to [JOB LIST Screen](#).